

(12) INTERNATIONAL APPLICATION PUBLISHED UNDER THE PATENT COOPERATION TREATY (PCT)

(19) World Intellectual Property
Organization
International Bureau

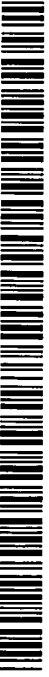


(43) International Publication Date
15 July 2004 (15.07.2004)

PCT

(10) International Publication Number
WO 2004/059294 A2

- (51) International Patent Classification⁷: **G01N** (US). **WOOD, Keith, V.** [US/US]; 8380 Swan Road, Mount Horeb, WI 53572 (US).
- (21) International Application Number: PCT/US2003/041454 (74) Agent: **MIAO, Emily**; McDonnell Bochner Hulbert & Berghoff, Suite 3200, 300 South Wacker Drive, Chicago, IL 60606 (US).
- (22) International Filing Date: 23 December 2003 (23.12.2003)
- (25) Filing Language: English
- (26) Publication Language: English
- (30) Priority Data:
60/436,173 23 December 2002 (23.12.2002) US
60/444,264 31 January 2003 (31.01.2003) US
60/447,334 13 February 2003 (13.02.2003) US
- (71) Applicant (for all designated States except US): **PROMEGA CORPORATION** [US/US]; 2800 Woods Hollow Road, Madison, WI 53711 (US).
- (72) Inventors; and
- (75) Inventors/Applicants (for US only): **HAWKINS, Erika** [CA/US]; 2230 Prairie Road, Madison, WI 53711 (US). **CALI, James, J.** [US/US]; 512 West Lawn Circle, Verona, WI 53593 (US). **HO, Samuel, Kin, Sang** [CA/US]; 2234 Luann Lane #313, Madison, WI 53713 (US). **O'BRIEN, Martha** [US/US]; 2117 E. Mifflin Street, Madison, WI 53704 (US). **SOMBERG, Richard** [US/US]; 2714 Richardson Street, Madison, WI 53711 (US). **BULLEIT, Robert, F.** [US/US]; 210 Jenna Drive, Verona, WI 53593
- (81) Designated States (national): AE, AG, AL, AM, AT, AU, AZ, BA, BB, BG, BR, BY, BZ, CA, CH, CN, CO, CR, CU, CZ, DE, DK, DM, DZ, EC, EE, ES, FI, GB, GD, GE, GH, GM, HR, HU, ID, IL, IN, IS, JP, KE, KG, KP, KR, KZ, LC, LK, LR, LS, LT, LU, LV, MA, MD, MG, MK, MN, MW, MX, MZ, NI, NO, NZ, OM, PG, PH, PL, PT, RO, RU, SC, SD, SE, SG, SK, SL, SY, TJ, TM, TN, TR, TT, TZ, UA, UG, US, UZ, VC, VN, YU, ZA, ZM, ZW.
- (84) Designated States (regional): ARIPO patent (BW, GH, GM, KE, LS, MW, MZ, SD, SL, SZ, TZ, UG, ZM, ZW), Eurasian patent (AM, AZ, BY, KG, KZ, MD, RU, TJ, TM), European patent (AT, BE, BG, CH, CY, CZ, DE, DK, EE, ES, FI, FR, GB, GR, HU, IE, IT, LU, MC, NL, PT, RO, SE, SI, SK, TR), OAPI patent (BF, BJ, CF, CG, CI, CM, GA, GN, GQ, GW, ML, MR, NE, SN, TD, TG).
- Published:
— without international search report and to be republished upon receipt of that report
- For two-letter codes and other abbreviations, refer to the "Guidance Notes on Codes and Abbreviations" appearing at the beginning of each regular issue of the PCT Gazette.



WO 2004/059294 A2

(54) Title: IMPROVED LUCIFERASE-BASED ASSAYS

(57) Abstract: A method and kit is provided for enhancing the tolerance of an assay reagent to compounds in an assay sample, the assay reagent including a luciferase enzyme. The method includes contacting the luciferase with a tolerance enhancement agent in an amount sufficient to substantially protect luciferase enzyme activity from interference of the compound and minimize interference by at least about 10% relative to an assay not having tolerance enhancement agent.

5

IMPROVED LUCIFERASE-BASED ASSAYSCROSS-REFERENCE

This application claims the benefit of priority from U.S. provisional application nos. 60/436,173, filed December 23, 2002; 60/444,264, filed January 31, 2003; and 60/447,334, filed February 13, 2003, all which are incorporated by reference in their entirety.

FIELD OF THE INVENTION

The present invention relates generally to bioluminescence. More particularly, the invention concerns methods, compositions, and kits for improving the accuracy of luciferase-based assays for high throughput screening of compound libraries by reducing the number of "false hits". The invention is particularly well suited for assays and test kits which use bioluminescence for quantitating products or occurrences of certain biospecific reactions in cellular and cell-free systems.

20

BACKGROUND OF THE INVENTION

Advances in the biological, biomedical and pharmaceutical sciences have accelerated the pace of research and diagnostics to a level unparalleled to the past. With sequences of whole genome becoming available quickly and successively, the assembly of large libraries of small molecules, the ability to move pharmaceutical development, clinical diagnostic tests and basic research from a reductionist to a whole system approach quickly all demand assays that facilitate high throughput analyses. Molecules no longer need to be singly analyzed for their effects on a lone process. Instead, the effects of many molecules on several biological systems can be studied simultaneously if appropriate, fast, reliable, and accurate assays are available.

Efficient, reliable and accurate assays for determining the occurrence of a certain biospecific events, e.g., enzyme inhibition in a cell-free environment or for assessing cell viability can be used to rapidly discover potential new pharmaceutical agents and to determine the cytotoxic effect or cell proliferation effect of such agents on cells. For instance, cancer pharmaceutical research often endeavors to identify compounds that selectively kill rapidly dividing cells, a primary characteristic of cancer cells. High throughput screens of compound libraries, coupled with efficient cell viability assays, can swiftly identify such compounds as potential cancer drugs. The efficacy of a candidate compound on cell viability can be assayed by detecting ATP since ATP production is realized only in metabolically active live cells; residual

ATP is rapidly degraded upon necrotic cell death. See U.S. Patent application no. 09/813,279, filed March 19, 2001, entitled "Improved Method for detection of ATP" (assignee: Promega) which is incorporated by reference in its entirety. In another example, the identification of potential drug compounds that should move forward in the drug development process can be made by determining the effects of these compounds on cytochrome P-450 enzyme activity. See U.S.S.N application no. 10/665,314, filed September 19, 2003, entitled "Luminescence-based methods and probes for measuring cytochrome P-450 activity" (assignee: Promega) which is incorporated by reference in its entirety. In a final example, proteases represent a large and important group of enzymes involved in diverse physiological processes including blood coagulation, inflammation, reproduction, fibrinolysis, and the immune response. The identification of protease inhibitors may be useful for the investigation, treatment or management of disease states caused by or characterized by the alteration in the activity of specific proteases. See U.S. Provisional application no. 60/353,158, filed Feb. 1, 2002 entitled "Bioluminescent Protease Assay" (assignee: Promega), which is incorporated by reference in its entirety. Assay systems like these not only facilitate the evaluation of a substance on cell viability or proliferation in a cellular environment or on the occurrence of a biospecific reaction, but also permit high throughput screens that can rapidly test thousands of compounds, streamlining new drug discovery.

The use of reporter molecules or labels to qualitatively or quantitatively monitor molecular events is well established in assays used for medical diagnosis, for the detection of toxins and other substances in industrial environments and for basic and applied research in biology, biomedicine and biochemistry. Reporter molecules or labels in such assay systems have included radioactive isotopes, fluorescent agents, enzymes, including light-generating enzymes such as luciferase. Desirable characteristics of any reporter molecule systems include safe, quick and reliable application and detection. Luminescent systems are among the most desirable since they are exceptionally safe and sensitive.

Light-emitting systems have been known and isolated from many luminescent organisms, including certain bacteria, protozoa, coelenterates, mollusks, fish, millipedes, flies, fungi, worms, crustaceans, and beetles. Those enzymes isolated from beetles, particularly the fireflies of the genera *Photinus*, *Photuris* and *Luciola* and click beetles of genus *Pyrophorus* have found widespread use in reporter systems. In many of these organisms, enzymatically catalyzed oxidoreductions take place in which the free energy change is utilized to excite a molecule to a high-energy state. When the excited molecule spontaneously returns to the ground state, visible light is emitted. This emitted light is called "bioluminescence" or "luminescence". Luminescent luciferase-based assays have been developed to monitor or measure kinase activity, P-450 activity, and protease activity. See, for instance, U.S. application No. 10/665,314, filed

September 19, 2003 (P-450 activity); U.S. Patent application no. 09/813,279, filed March 19, 2001 (kinase activity); and U.S. provisional application no. 60,353,158, filed February 1, 2002 (protease activity), commonly owned by Promega Corporation.

Genetic reporter systems are widely used to study eukaryotic gene expression and cellular
5 physiology. Applications include the study of receptor activity, transcription factors, intracellular
signaling, mRNA processing and protein folding. Currently, luciferase genes from a wide variety
of vastly different species, particularly the luciferase genes of *Photinus pyralis* (the common
firefly of North America), *Pyrophorus plagiophthalmus* (the Jamaican click beetle), *Renilla*
reniformis (the sea pansy), and several bacteria (e.g., *Xenorhabdus luminescens* and *Vibrio* spp),
10 are extremely popular luminescence reporter genes. Reference is made to Bronstein, et al. (1994)
Anal. Biochem., Vol. 219, pp. 73-82, for a review of luminescence reporter gene assays. Firefly
luciferase is also a popular reporter for ATP concentrations, and in that role is widely used to
detect biomass. Various other reporter applications of luciferases have been described in the
scientific literature. Luminescence may be produced by other enzymes when mixed with certain
15 synthetic substrates; such as alkaline phosphatase mixed with adamantyl dioxetanes, or
horseradish peroxidase mixed with luminol.

Luciferase genes are widely used as genetic reporters due to the non-radioactive nature,
sensitivity, and extreme linear range of luminescence assays. For instance, as few as 10^{-20} moles
of the firefly luciferase can be detected. Consequently, luciferase assays of gene activity are used
20 in virtually every experimental biological system, including both prokaryotic and eukaryotic cell
cultures, transgenic plants and animals, and cell-free expression systems. Similarly, luciferase
assays of ATP are highly sensitive, enabling detection to below 10^{-16} moles of ATP.

Luciferases generate light via the oxidation of enzyme-specific substrates, called
luciferins. For firefly luciferase and all other beetle luciferases, this is done in the presence of
25 magnesium ions, oxygen, and ATP. For anthozoan luciferases, including *Renilla* luciferase, only
oxygen is required along with the luciferin. Generally, in luminescence assays of genetic activity,
reaction substrates and other luminescence-activating reagents are introduced into a biological
system suspected of expressing a reporter enzyme. Resultant luminescence, if any, is then
measured using a luminometer or any suitable radiant energy-measuring device. The assay is very
30 rapid and sensitive, and provides gene expression data quickly and easily, without the need for
radioactive reagents. Reporter assays other than for genetic activity are performed analogously.

The conventional assay of genetic activity using firefly luciferase has been further
improved by including coenzyme A (CoA) in the assay reagent to yield greater enzyme turnover
and thus greater luminescence intensity. (Promega Luciferase Assay Reagent, Cat. No. E1500,
35 Promega Corporation, Madison, Wis.; see U.S. Pat. No. 5,283,179, issued Feb. 1, 1994.) Using
this reagent, luciferase activity can be readily measured in luminometers or scintillation counters.

The luciferase reaction, modified by the addition of CoA to produce persistent light emission, provides an extremely sensitive and rapid assay for quantifying luciferase expression in genetically altered cells or tissues.

Dual reporters are commonly used to improve experimental accuracy. The term "dual reporter" refers to the simultaneous expression and measurement of two individual reporter enzymes within a single system. In genetic reporting, examples that currently benefit from dual-reporter assays include individual cells or cell populations (such as cells dispersed in culture, segregated tissues, or whole animals) genetically manipulated to simultaneously express two different reporter genes. Most frequently, the activity of one gene reports the impact of the specific experimental conditions, while the activity of the second reporter gene provides an internal control by which all sets of experimental values can be normalized. Normalizing the activity of the experimental reporter to the activity of the internal control minimizes experimental variability caused by differences in cell viability or transfection efficiency. Other sources of variability, such as differences in pipetting volumes, cell lysis efficiency and assay efficiency, can be effectively eliminated. Thus, dual reporter assays often allow more reliable interpretation of the experimental data by reducing extraneous influences.

In genetic reporting, examples that currently benefit from dual-reporter assays include individual cells or cell populations (such as cells dispersed in culture, segregated tissues, or whole animals) genetically manipulated to simultaneously express two different reporter genes. Most frequently, the activity of one gene reports the impact of the specific experimental conditions, while the activity of the second reporter gene provides an internal control by which all sets of experimental values can be normalized.

Cell-free reconstituted systems that may benefit from dual-enzyme reporter technology are cellular lysates derived for the simultaneous translation, or coupled transcription and translation, of independent genetic materials encoding experimental and control reporter enzymes. Immuno-assays may, likewise, be designed for dual-reporting of both experimental and control values from within a single sample.

Currently, genes encoding firefly luciferase (*luc*), chloramphenicol acetyl transferase (CAT), beta-galactosidase (*lacZ*), beta-glucuronidase (GUS) and various phosphatases such as secreted alkaline phosphatase (SEAP) and uteroferrin (Uf; an acid phosphatase) have been combined and used as co-reporters of genetic activity. The following references provide representative examples of these various reporter genes used in combined form for the purpose of dual-reporting of genetic activity: *luc* and GUS: Leckie, F., et al., 1994; *luc* and CAT, and *luc* and *lacZ*: Jain, V. K. and Magrath, I. T., 1992; CAT and *lacZ*: Flanagan, W. M. et al., 1991; SEAP and Uf: Kondepudi, et al., 1994. See also Promega Dual-Luciferase® Reporter Assay system as well as Promega pGL3 Luciferase Reporter Vectors (available from Promega Corporation,

Madison, WI) as well as U.S. Patent nos. 5,744,320 and 5,670,356 (assignee: Promega Corporation), which are incorporated by reference in their entirety.

When luciferase is combined with a sample for the purpose of detecting a product such as ATP or the occurrence of a biospecific event, e.g., inhibition or activation of caspase or P-450 activity, either in an enzyme assay or single/dual reporter assay format, one or more of the compounds in a chemical library used for high throughput drug screening may adversely interact with luciferase and thus interfere with the assay. For instance, in a caspase assay compounds that only inhibit caspase will result in decreased luminescence and would not be easily distinguishable from compounds that only inhibit luciferase activity which also decreases luminescence. There is a need for luciferase-based assays with improved tolerance for compound interference, especially when employed in high throughput screening procedures.

SUMMARY OF THE INVENTION

The present invention provides methods, compositions and kits for improved luciferase-based assays with enhanced tolerance for interference by one or more compounds, particularly in high throughput screening of compound libraries. The inventive compositions comprise a luciferase and a tolerance enhancing agent that substantially protects luciferase activity from interference by one or more compounds that inhibit or interact with luciferase during screening assays. An optional ATPase inhibitor may be used, particularly if the sample includes cell lysates or enzyme mixtures with ATPase activity. Preferably, the tolerance enhancing agent is a detergent. The improved composition is useful in any assay that employs luciferase as a component of an assay reagent for determining the effect of one or more compounds on purified enzymes, enzyme mixtures, cell lysates or extracts, and/or tissue homogenates in a sample. For instance, the improved compositions may be used in methods for determining the effect of one or more compounds on kinase enzyme activity, protease activity, P-450 enzyme activity, and ATP utilizing or generating enzyme activity contained in a sample.

The invention provides methods for enhancing the tolerance of a luciferase enzyme activity to compound interference in a luciferase based assay. In one embodiment, the methods comprise contacting a luciferase enzyme with a tolerance enhancement agent in an amount sufficient to substantially protect luciferase activity from interference of the compound.

The invention also provides methods of determining the effect of a compound on a non-luminogenic enzyme activity comprising: (a) providing a compound and a luminogenic molecule, wherein the luminogenic molecule is a substrate of the non-luminogenic enzyme and a pro-substrate of a luciferase enzyme; (b) contacting the compound and the non-luminogenic enzyme so as to produce a first reaction mixture; (c) contacting the first reaction mixture with a reagent composition comprising luciferase, the luminogenic molecule, and a tolerance enhancement agent

so as to produce a second reaction mixture, wherein said tolerance enhancement agent being present in an amount effective to at least substantially protect the activity of the luciferase from interference from the compound; (d) detecting luminescence in the second reaction mixture; and (e) determining the effect of the compound on the non-luminogenic enzyme activity, if any, result from the interaction of the compound with the enzyme by measuring and comparing the luminescence of the second reaction mixture with a control reaction mixture. In one embodiment of the invention, the steps are conducted sequentially. In another embodiment of the invention, steps (b) and (c) are conducted simultaneously.

In addition, the invention provides methods of determining the effect of a compound on a non-luminogenic enzyme activity comprising: (a) providing a compound and a luminogenic molecule, wherein the luminogenic molecule is a substrate of the non-luminogenic enzyme and a pro-substrate of a luciferase enzyme; (b) contacting the compound, and the non-luminogenic enzyme so as to produce a first reaction mixture; (c) contacting the first reaction mixture with the luminogenic molecule so as to produce a second reaction mixture; (d) contacting the second reaction mixture with a reagent composition comprising luciferase and a tolerance enhancement agent so as to produce a third reaction mixture, wherein said tolerance enhancement agent being present in an amount effective to at least substantially protect the activity of the luciferase from interference from the compound; (e) detecting luminescence in the third reaction mixture; and (f) determining the effect of the compound on the non-luminogenic enzyme activity, if any, result from the interaction of the compound with the enzyme by measuring and comparing the luminescence of the third reaction mixture with a control reaction mixture. In one embodiment of the invention, the steps are conducted sequentially. In another embodiment of the invention, steps (b) and (c), or steps (c) and (d), or steps (b) to (d) are conducted simultaneously.

In addition, the invention provides methods of determining the effect of a compound on a non-luminogenic enzyme activity comprising: (a) providing a compound for testing and a reagent composition comprising a luminogenic molecule, wherein the luminogenic molecule is a substrate of the non-luminogenic enzyme and a pro-substrate of a luciferase enzyme; the non-luminogenic enzyme; luciferase; and a tolerance enhancement agent, wherein said tolerance enhancement agent being present in an amount effective to at least substantially protect the activity of the luciferase from interference from the compound; (b) detecting luminescence in the final reaction mixture; and (c) determining the effect of the compound on the non-luminogenic enzyme activity, if any, result from the interaction of the compound with the enzyme by measuring and comparing the luminescence of the final reaction mixture with a control reaction mixture.

Furthermore, the invention provides methods of determining the effect of a compound on a non-luminogenic enzyme activity comprising: (a) providing a luminogenic molecule and a compound for testing, the luminogenic molecule is a substrate for the non-luminogenic enzyme

and a pro-substrate for luciferase; (b) contacting the compound, the luminogenic molecule and a non-luminogenic enzyme so as to produce a first reaction mixture; (c) contacting the first reaction mixture with a reagent composition comprising luciferase, and a tolerance enhancement agent so as to produce a second reaction mixture, wherein said tolerance enhancement agent being present
5 in an amount effective to at least substantially protect the activity of the luciferase from interference from the compound; (d) detecting luminescence in the second reaction mixture; and (e) determining the effect, if any, of the compound on non-luminogenic enzyme activity resulting from the interaction of the compound with the enzyme by measuring and comparing the luminescence of the second reaction mixture with a control reaction mixture. In one embodiment
10 of the invention, the steps are conducted sequentially. In another embodiment of the invention, steps (b) and (c) are conducted simultaneously.

The invention also provides methods of determining the effect of a compound on a non-luminogenic enzyme activity comprising: (a) providing a compound for testing, a substrate for the non-luminogenic enzyme, a non-luminogenic enzyme, and ATP or ADP; (b) contacting the
15 compound, the substrate, ATP or ADP, and a non-luminogenic enzyme so as to produce a first reaction mixture; (c) contacting the first reaction mixture with a reagent composition comprising luciferase, luciferin, and a tolerance enhancement agent so as to produce a second reaction mixture, wherein said tolerance enhancement agent being present in an amount effective to at least substantially protect the activity of the luciferase from interference from the compound; (d)
20 detecting luminescence in the second reaction mixture; and (e) determining the effect, if any, of the compound on non-luminogenic enzyme activity resulting from the interaction of the compound with the enzyme by measuring and comparing the luminescence of the second reaction mixture with a control reaction mixture. In one embodiment of the invention, the steps are conducted sequentially. In another embodiment of the invention, steps (b) and (c) are conducted
25 simultaneously.

The invention further provides methods of determining the effect of a compound on ATP generating enzyme activity in a sample comprising: (a) providing ADP and a compound for testing; (b) contacting the compound, ADP and a sample so as to produce a first reaction mixture; (c) contacting the first reaction mixture with a reagent composition comprising luciferase,
30 luciferin, and a tolerance enhancing agent so as to produce a second reaction mixture, wherein said tolerance enhancement agent being present in an amount effective to at least substantially protect the activity of the luciferase from interference from the compound; (d) detecting luminescence in the second reaction mixture; and (e) determining the effect, if any, of the compound on ATP generating enzyme activity resulting from the interaction of the compound
35 with the ATP generating enzyme by measuring and comparing the luminescence of the second reaction mixture with a control reaction mixture. In one embodiment of the invention, the steps

are conducted sequentially. In another embodiment of the invention, steps (b) and (c) are conducted simultaneously.

The invention further provides methods of determining the effect of a compound on ATP generating enzyme activity in a sample comprising: (a) providing a compound for testing, and
5 contacting the compound with a reagent composition comprising ADP, luciferase, luciferin, and a tolerance enhancing agent, wherein said tolerance enhancement agent being present in an amount effective to at least substantially protect the activity of the luciferase from interference from the compound; (b) detecting luminescence in the second reaction mixture; and (c) determining the effect, if any, of the compound on ATP generating enzyme activity resulting from the interaction
10 of the compound with the ATP generating enzyme by measuring and comparing the luminescence of the second reaction mixture with a control reaction mixture.

In a particular embodiment, a tolerance enhancement agent of the invention can comprise a detergent, for example, a cationic, anionic, non-ionic, or zwitterionic detergent. In another embodiment, a tolerance enhancement agent can comprise a non-detergent, for example,
15 polyethylene glycol, polyvinyl pyridine, crown ether, and cyclodextrin. In yet another embodiment, the detergent can comprise Tergitol®, Brij 35®, Brij 58®, Triton X-100®, Triton X-305®, Triton N101®, CHAPS®, Chapso®, Bigchap®, Thesit®, Pluronic L64®, Rhodasurf 870®, Chemal LA-9®, Sulfonyl 465®, deoxycholate, CTAB, Pierce C08®, or Pierce C10® detergent.

20 In another embodiment, the methods of the invention further comprise correlating luminescence with enzyme concentration or activity.

In one embodiment, the enzyme activity is contained in a sample. In one aspect, a sample can be a purified, partially purified or crude enzyme or mixtures of enzymes, a cell lysate, a tissue homogenate, or a subcellular fraction.

25 In another embodiment, a non-luminogenic enzyme in a method of the invention can be a protease. In one aspect, the protease can be, for example, trypsin, trypsinase, or caspase. In another aspect, the caspase can comprise caspase-3, caspase-7, caspase-8 or caspase-9. In another aspect, the luminogenic substrate can comprise any masked substrate that is a substrate of the protease and a prosubstrate of the luciferase such as an amino-modified aminoluciferin or a
30 carboxyl protected derivative thereof.

In still another embodiment, the non-luminogenic enzyme can be a cytochrome P-450 enzyme, and the luminogenic substrate can be a D-luciferin derivative, and the tolerance enhancement agent can be Tergitol® detergent, for example, Tergitol NP-9® detergent.

35 In yet another embodiment, the non-luminogenic enzyme can be a kinase and the detergent can be Tergitol®, Thesit®, or CHAPS® detergent.

In another embodiment, the compound and enzyme in a method of the invention can be

contacted for a first predetermined time period prior to contact with the substrate and ATP or ADP. In one aspect, the substrate and ATP or ADP are added sequentially or simultaneously.

In yet another embodiment, an ATP generating enzyme can be a kinase or phosphatase and the tolerance enhancement agent comprises Tergitol®, Thesit®, or CHAPS® detergent.

5 The invention further provides methods of determining the effect of a compound on a kinase enzyme activity in an assay sample not containing living cells, comprising: (a) providing a compound for testing, a kinase substrate, a kinase enzyme, and ATP or ADP; (b) contacting the compound, the substrate, ATP or ADP, and kinase enzyme so as to produce a first reaction mixture; (c) contacting the first reaction mixture with a reagent composition comprising
10 luciferase, luciferin, and a tolerance enhancement agent so as to produce a second reaction mixture, wherein said tolerance enhancement agent being present in an amount effective to substantially protect the activity of the luciferase from interference from the compound; (d) detecting luminescence in the second reaction mixture; and (e) determining the effect of the compound, if any, on kinase enzyme activity by comparing the detected luminescence to the
15 luminescence of a similar reaction mixture not containing the compound, or containing the compound at a different concentration.

In a particular embodiment, the kinase enzyme is a protein kinase.

In one embodiment, the tolerance enhancement agent comprises a Tergitol®, Thesit®, or Chaps® detergent.

20 In another embodiment, the compound and kinase enzyme are contacted for a first predetermined time period prior to contact with the substrate and ATP or ADP.

In another embodiment, the substrate and ATP or ADP are added sequentially or simultaneously.

In yet another embodiment, the steps are carried out sequentially.

25 In yet another embodiment, steps(b) and (c) are carried out simultaneously.

The invention also provides kits comprising, for example: (a) a tolerance enhancement agent for substantially protecting luciferase activity from interference from a test compound; (b) optional luciferase enzyme; (c) optional buffer reagents; and (d) directions for using the kit. In one embodiment, a kit of the invention further comprises ATP and magnesium ions. In another
30 embodiment, a kit of the invention further comprises luciferin, a cell lysing agent, and/or an ATP extracting agent.

These and other embodiments of the invention will become apparent in light of the detailed description below.

35 BRIEF DESCRIPTION OF THE DRAWINGS

FIG. 1 illustrates the relief of inhibition on luciferase by detergents in a standard

luciferase-based reaction in the presence of potential luciferase inhibitors tyrphostin AG494 or emodin. Part (a) compares RLU of control (no detergent) against reaction mixtures that contain 0.1 or 1% of Tomah, Tergitol, Thesit, CHAPS, or Triton X-100 as a function of relative light unit values. Part (b) is an analysis that compares the relative % of control against reaction mixtures that contain 0.1 or 1% of Tomah, Tergitol, Thesit, CHAPS, or Triton X-100

Figure 2 illustrates the relief of inhibition on luciferase by a detergent, Tergitol, during screening of a known drug library using a standard luciferase-based reaction. Part (a) compares the RLU of control (no detergent) against reaction mixtures. Five drug compounds of the library were found to inhibit luciferase enzyme in the absence of Tergitol. Part (b) is a repeat of part (a) and compares the RLU in the presence of 0.1% Tergitol. Part (c) is a repeat of part (a) and compares the RLU in the presence of 1% Tergitol. Part (d) is a bar graph that shows the dramatic effect of Tergitol against four of the five drug inhibitors.

DETAILED DESCRIPTION OF THE INVENTION

A. Definitions

Unless defined otherwise, all technical and scientific terms have the same meaning as is commonly understood by one of skill in the art to which this invention belongs. All cited patents and publications are incorporated by reference in their entirety unless otherwise noted.

The nomenclature recommendations of Demerec et al, 1966, where these are relevant to genetics, are adapted herein. To distinguish between genes (and related nucleic acids) and the proteins that they encode, the abbreviations for genes are indicated by *italicized* (or underlined) text while abbreviations for the proteins start with a capital letter and are not italicized. Thus, *luc* or LUC refers to the luciferase nucleotide sequence that encodes luciferase polypeptide or Luc.

An "isolated" or "purified" luciferase is one that has been identified and separated and/or recovered from a component of its natural environment.

As used herein, the term "luciferase" refers to one or more oxygenases that catalyze a light emitting reaction. Thus, luciferase refers to an enzyme or photoprotein that catalyzes a reaction that produces bioluminescence. Luciferases of the invention can be recombinant or naturally occurring, or a variant or mutant thereof, such as a variant produced by mutagenesis that has one or more properties, such as thermal stability, that differ from the naturally-occurring protein. Non-limiting examples of naturally occurring luciferases include, luciferases found among marine arthropods, firefly luciferase, click beetle luciferase, and railroad worm luciferase. A non-limiting example of a luciferase photoprotein is the aquorin photoprotein.

The term "sample" as used herein, is used in its broadest sense and includes, without limitation, a pure, partially purified or crude enzyme or mixtures of enzymes, cell lysates, subcellular fractions, or tissue homogenates.

The term "detection," as used herein, refers to quantitatively or qualitatively determining the effect of a test compound on the sample.

"Percent (%) amino acid sequence identity" is defined as the percentage of amino acid residues in one sequence that are identical to, with, or against amino acid residues in a second sequence in the region of overlap when the two sequences are optimally aligned. To determine percent amino acid identity, sequences are locally aligned and if necessary, gaps are introduced to achieve the maximum percent sequence identity; conservative substitutions are not counted when calculating sequence identity. Amino acid sequence alignment procedures to determine percent identity are well known to those of skill in the art. Publicly available computer software such as BLAST software (available from the National Center for Biotechnology Information, Bethesda, MD) may be used to align peptide sequences. Those skilled in the art can determine appropriate algorithms and parameters for measuring alignment, including any algorithms and parameters needed to achieve optimal alignment of two amino acid sequences.

When amino acid sequences are aligned, the percent amino acid sequence identity of a given amino acid sequence A to, with, or against a given amino acid sequence B (which can alternatively be phrased as a given amino acid sequence A that has or comprises a certain percent amino acid sequence identity to, with, or against a given amino acid sequence B) can be calculated as:

$$\% \text{ amino acid sequence identity} = (X/Y) \cdot 100$$

where X is the number of amino acid residues scored as identical matches in the optimal alignment of A and B by the sequence alignment program or algorithm and Y is the total number of amino acid positions aligned.

B. Method, composition and kits

In one embodiment of the invention, the present invention provides compositions with properties comprising a luciferase, a tolerance enhancing agent to improve tolerance for compound interference, and/or one or more optional ATPase inhibitors. The tolerance enhancing agent includes one or more substances such as detergents or sequestering agents that improves the tolerance of the luciferase assay against interference by one or more test compounds during a screening procedure. Some of the tolerance enhancing agents, e.g., detergents, may also function as an enzyme anti-degradation agent, or as an ATPase inhibitor. In the case where the tolerance enhancing agent does not act as an ATPase inhibitor and ATPase inhibition is desired, especially when samples having cell lysates are used, one or more ATPase inhibitors may be included. The invention further provides methods using these novel compositions to detect products or occurrence of a biospecific event in a sample measured as a single-step or as a multi-step protocol. Preferably the luminescence resulting from the combination of a composition of the

invention with a sample has an extended duration, i.e., diminished by less than about 50% relative to the luminescence just after the composition is combined with the sample. The process of the invention significantly reduces the time and effort of luciferase-mediated detection of the effects of compounds on a sample or detection of occurrence of a biospecific event.

5 In general, the methods comprise adding a composition ("reagent composition") comprising a luciferase (such as exemplified by, but are not limited to SEQ ID Nos 1 – 4 described below), a tolerance enhancing agent, and/or one or more optional ATPase inhibitors (if the tolerance enhancing agent does not have ATPase inhibitory activity) to a sample and detecting luminescence, wherein the activity of the reagent has enhanced tolerance to luciferase inhibitors
10 (i.e. the reagent composition is capable of protecting the luminescent signal from inhibition by at least 10% over the reagent in the absence of the tolerance enhancing component). Even more preferably, the tolerance enhancing agent would protect the luminescent signal by at least 30%, 50%, 60%, 70%, 80%, 90%, 99% or greater. The reagent composition may be admixed before use by adding a solution comprising one or more optional ATPase inhibitors to a lyophilized
15 luciferase.

As mentioned above, the invention may be practiced in an environment that generates luminescence with extended duration. Loss of stability is defined as irreversible loss of activity. The reagent composition loses stability over time and the amount of activity lost varies depending on the particular luciferase, tolerance enhancing agent, optional ATPase inhibitor and, when
20 present, enzyme stabilizing agent used. In some instances, the tolerance enhancing agent may have enzyme stabilizing ability and thus may be used in place of a separate enzyme stabilizing agent. Preferably the stability of the reagent composition is demonstrable in the temperature range of about 20°C to about 37°C. Although the methods of the invention may be used with a sample containing any amount of ATP, it is preferable to use a sample containing a non-saturated
25 amount of ATP (i.e., a range where luminescence is linearly proportional to the concentration of ATP) in assays designed to detect ATP levels. For assays where luciferin levels are measured such as in a Cytochrome P-450 or protease assay that employs pro-luciferin derivatives, it is desirable to employ saturating ATP levels since luciferin, not ATP, levels are being measured.

The luminescence generated by a luciferase reaction is typically detected with a
30 luminometer although other detection means maybe used. The presence of light greater than background level indicates the presence of ATP in the sample. The background level of luminescence is typically measured in the same matrix in which the sample exists, but in the absence of the sample. Suitable control reactions are readily designed by one of skill in the art. Preferred luciferases used in the compositions and methods of the invention generate a stable
35 signal, i.e., they yield enhanced duration of luminescence in a luciferase reaction defined as less than 50% loss of luminescence per hour relative to the luminescence at the time the luciferase

reaction was initiated. Preferred luciferases of the invention allow for multiple analyses of a sample over time or analysis of many samples over time, one hour after the luciferase is combined with the reagent composition, more preferably two hours and most preferably four hours or more. Optionally, the luciferases used in the compositions and methods of the invention have enhanced thermostability properties.

Quantifying the amount of emitted light also quantifies the amount of ATP in a sample, and thereby light can be used to quantify living cells. Quantitative ATP values are realized, for example, when the quantity of light emitted from a test sample is compared to the quantity of light emitted from a control sample or to a standard curve determined by using known amounts of ATP and the same luciferase, substrate, and reaction conditions (i.e. temperature, pH, etc.). It is understood that quantification involves subtraction of background values. Qualitative ATP values are realized when the luminescence emitted from one sample is compared to the luminescence emitted from another sample without a need to know the absolute amount of ATP present in the samples, e.g., a comparison of samples in the presence or absence of a test compound. Many such experiments can readily be designed by one of ordinary skill in the art

Examples of ATPase inhibitors include detergents, preferably detergents with charged groups such as cationic detergents [*e g*, DTAB (dodecyltrimethylammonium bromide), CTAB (cetyltrimethylammonium) and BDDABr (benzyltrimethylammonium bromide)], anionic detergents (*e.g.*, SDS and deoxycholate), and zwitterionic detergents (*e g*, sulfobetaine 3-10)]. To facilitate the method, a substrate for the luciferase, such as luciferin, may be included in the reagent composition. Other embodiments of the reagent composition may further comprise a compound that prevents an increase in ATP levels in the sample over time. Compounds that prevent an increase in ATP levels in the sample include NaF, vanadate and para-nitrophenylphosphate. Still other embodiments of the reagent composition further comprise a buffer and magnesium. One of skill in the art knows that other cations, such as manganese and calcium, may be suitable substitutes for magnesium.

The reaction composition may also comprise an optional enzyme stabilizing agent. The enzyme stabilizing agent can be any compound that stabilizes the luciferase from degradation. Suitable enzyme stabilizing agents include proteins (such as bovine serum albumin or gelatin) or detergents (preferably non-ionic detergents, most preferably THESIT).

Further, the present invention is useful for determining the effect of small molecules (including organic and inorganic molecules and synthetic and naturally occurring molecules) on cell free enzyme assays, which in turn allows the assessment of whether the small molecule may function as a pharmaceutical. The invention is directed to methods that determine the effect of a small molecule or compound on a cell-free enzyme. One of skill in the art may develop many other such assays for which the invention is useful.

The invention also assembles the elements of the invention into kits. Such kits are designed to determine the effect of a compound or the occurrence of a biological event within a sample, e.g. determining the effects of compounds on enzymes. Kits can be multifunctional such that more than one purpose can be realized. In one embodiment, a kit comprises lyophilized luciferase in one container, while another container contains reconstitution buffer with one or more tolerance enhancing agents and/or one or more ATPase inhibitors. The tolerance enhancement agents and/or ATPase inhibitors may be selected from the substances and detergents already disclosed, for example, DTAB, BDDABr, SDS, deoxycholate, or sulfobetaine 3-10, or a combination thereof.

10 The kit may also supply a luciferase substrate, such as luciferin, coelenterazine, or a functional derivatives thereof. The kit may also supply magnesium or other cations such as manganese or calcium. To facilitate the use of control experiments with known concentrations of ATP, such as in embodiments of the kits that are used to quantify ATP in a sample, a container that has ATP may also be supplied in such kits. The kit may also supply a compound that prevents an increase in the amount of ATP in the sample over time (e. g., NaF). The kit may also supply an ATP-ase inhibitor (e.g., TCA, DMSA, CTAB, ethanol, and the like). The kit may also supply a buffer. The kit may also supply an enzyme stabilizing agent, e.g., BSA or gelatin or THESIT.

20 The kit may contain components which, when combined, generate a reagent composition that (i) maintains at least about 30% (preferably at least about 60%, even more preferably at least 70%, 80%, 90%, 95%, 99%) activity for at least about one hour (preferably at least two hours, more preferably four hours), as detected by luminescence when the reagent composition is combined with a sample, and relative to the reagent composition's activity just after it is assembled (i.e., 0 to 10 minutes after the component comprising luciferase is combined with the component comprising an tolerance enhancing agent and optional ATPase inhibitor) and (ii) reduces at least about 25% or at least about 30%, (preferably at least about 40%, even more preferably at least about 50%, 60%, 70%, 80%, 90%, 95%, 99% or any increment therein) of the ATPase activity that is endogenous to the sample relative to the sample's ATPase activity in the absence of the ATPase inhibitor.

30 The component comprising an ATPase inhibitor may comprise greater than one ATPase inhibitor wherein they are present in the reagent composition at a concentration such that their combined effect reduces at least about 25% or at least about 30%, (preferably at least about 40%, even more preferably at least about 50%, 60%, 70%, 80%, 90%, 95%, 99% or any increment therein) of the ATPase activity that is endogenous to the sample relative to the sample's ATPase activity in the absence of the ATPase inhibitor and when allow for the reagent composition.

35 The kit preferably comprises a container comprising a buffered detergent solution, said

buffered detergent solution at a pH in the range of about pH 6.0 to about pH 9.0. In one embodiment of the invention, said buffered detergent solution comprising DTAB whose concentration in the reagent composition is in the range of about 0.05% to about 2% (w/v) and optionally comprising NaF whose concentration in the reagent composition is in the range of about 1 mM to about 20 mM and optionally comprising THESIT, a tolerance enhancing non-ionic detergent agent, whose concentration in the reagent composition is in the range of about 1% to about 5%. The kit additionally comprises a separate container comprising lyophilized luciferase, preferably a luciferase with the sequence of SEQ ID Nos: 1, 2, 3, or 4, most preferably SEQ ID Nos: 2 or 4. Preferably the luciferase, when combined with the buffered detergent solution creating the reagent composition, is at a concentration of 1 $\mu\text{g/ml}$ or greater, more preferably at a concentration of 80 $\mu\text{g/ml}$ or greater. Preferably, the container comprising lyophilized luciferase further comprises lyophilized luciferin. Optionally, the kit further comprises instructions for use of the kit for the purpose of measuring ATP.

In preferred embodiments, the present invention reduces to a single step the manipulations needed for determining enzyme, e.g., kinase, activity in a sample in the presence of one or more test compounds, prior to luminescence measurement. In the single-step ATP assay of the invention, all of the necessary components of the ATP-dependent enzyme (e.g., luciferase), such as the enzyme, substrates, tolerance enhancer substances and ATPase inhibitors are comprised within a reagent composition and are added to a sample at once. In some embodiments, a component of the reagent composition is an enzyme stabilizing agent.

In another embodiment of the invention, methods, compositions and kits are provided for determining the effect of one or more compounds, preferably in a high-throughput screening format, on enzyme, e.g., protease, activity by detecting and quantifying luciferin levels in a sample. The method comprises adding to a sample a composition ("reagent composition") comprising a luciferase enzyme, a tolerance enhancing agent to improve tolerance for compound interference, and a substrate for the protease that is a prosubstrate for the luciferase such as an amino-modified aminoluciferin or carboxyl protected derivative thereof, and detecting luminescence produced in the sample by the conversion of a substrate-derived aminoluciferin into a luminescing compound by luciferase. These masked luciferase substrates are cleaved and unmasked by the protease. For instance, the amino-modified aminoluciferin or derivative thereof has a covalent linkage of a protease substrate to the amino group of aminoluciferin and the protease is capable of cleaving its substrate at the covalent linkage or peptide bond, releasing aminoluciferin, a substrate for luciferase. U.S. patent application no. 60/353,158, filed Feb. 1, 2002 entitled "Bioluminescence protease assay" (assignee: Promega Corp.), incorporated herein in its entirety, describes luciferase-based assays for determining protease activity and useful protease substrates.

In one aspect of this invention, a sensitive luminescent method is provided to determine protease activity, e.g., a caspase, trypsin or trypsinase, in the presence of one or more compounds. For instance, the invention provides a luminescent assay method to determine the activity of one or more caspases in the presence of one or more compounds. The method comprises contacting a
5 sample suspected of having one or more caspases with a mixture comprising beetle luciferase and an amino-modified beetle aminoluciferin or a carboxyl protected derivative thereof, and a tolerance enhancing agent wherein the amino group of aminoluciferin or the derivative thereof is modified so as to covalently link a substrate for the caspase or the carboxyl protected derivative thereof via a peptide bond to aminoluciferin. If the sample comprises a caspase having a
10 recognition site in the substrate, the substrate is cleaved at the peptide bond that links the substrate to aminoluciferin, yielding aminoluciferin, a substrate for the luciferase, in the mixture. Luminescence is then detected. The method further comprises correlating luminescence with protease concentration or activity, i.e., increased luminescence correlates with increased protease concentration or activity. As defined herein, the term "functional equivalent" of a reference
15 substrate is a substrate having one or more amino acid substitutions relative to the sequence of the reference substrate, which functionally equivalent substrate is recognized and cleaved by the same protease at a substantially similar efficiency as the reference substrate. Preferably, the increased protease assay sensitivity with methods employing the luminescent substrates described in U.S. patent application no.60/353,158, filed Feb. 1, 2002 is at least 2 times, more preferably 3, 4, 5, 6,
20 7, 8, 9, or 10, or even greater, for instance, at least 15, 20, 25, 30, 40, 50, 100, 200, 500, or 1000 times or more, greater than that of a comparable assay employing a conjugate comprising a fluorophore covalently linked to at least one substrate molecule or a functional equivalent thereof. Thus, the methods of the invention may detect less than 5 uU, or less, e.g., less than 1uU, 0.5 uU or 0.2 uU of caspase in a sample. As used herein, the limit of detection means 3 standard
25 deviations above background noise ("noise" is 1 standard deviation of background and background is a control without caspase).

Using a substrate for caspase 3 and 7 that was linked to either aminoluciferin or rhodamine-110, it was found that the limit of detection for the aminoluciferin-based substrate was 0.2-0.5 uU of purified caspase while that for the rhodamine-110-based substrate was 10 uU. It
30 was also found that the limit of detection of caspase expressing cells with the aminoluciferin-based substrate was 15 cells at 1 hour while the limit of detection for the rhodamine-110-based substrate was 150 cells at 1 hour. The methods of the invention may be employed with a sample comprising purified, partially-purified, or crude preparations of enzyme.

The invention also provides a luminescent assay method to detect a protease activity
35 where the protease that specifically cleaves a substrate comprising aspartate. The method comprises contacting a sample having one or more aspartate-specific proteases and including one

or more compounds with a mixture comprising luciferase, a tolerance enhancing agent, and an amino-modified aminoluciferin or a carboxyl protected derivative thereof, wherein the amino group of aminoluciferin or the derivative thereof is modified so as to covalently link the substrate via a peptide bond to aminoluciferin or a carboxyl protected derivative thereof. The protease
5 having aspartate as a recognition site will cleave the substrate at the peptide bond that links the substrate comprising aspartate to aminoluciferin, yielding aminoluciferin, a substrate for the luciferase in the mixture. Then luminescence is detected in the sample. Preferred proteases that specifically cleave a substrate comprising aspartate include but are not limited to caspases, e.g., any one of caspases 1-14. Preferred substrates comprise X_1 - X_2 - X_3 -D, wherein X_1 is Y, D, L, V, I,
10 A, W, or P; X_2 is V or E; and X_3 is any amino acid, for instance, a substrate comprising DEVD, WEHD, VDVAD, LEHD, VEID, VEVD, VEHD, IETD, AEVD, LEXD, VEXD, IEHD, or PEHD.

The invention also provides a luminescent assay method to determine trypsin or tryptase activity in the presence of one or more compounds. The method comprises contacting a sample
15 having trypsin or tryptase and one or more test compounds with a mixture comprising luciferase and an amino-modified aminoluciferin or a carboxyl protected derivative thereof, and a tolerance enhancer agent, wherein the amino group of aminoluciferin or the derivative thereof is modified so as to covalently link a substrate for trypsin or tryptase via a peptide bond to aminoluciferin or a carboxyl protected derivative thereof. Luminescence is then detected. Preferably, the luminescent
20 assay is more sensitive than a corresponding assay with a conjugate comprising a fluorophore covalently linked to at least one substrate molecule or a functional equivalent thereof. For trypsin, arginine and lysine are functionally equivalent substrates as trypsin cleaves the peptide bond after those residues with substantially similar efficiencies. The increased assay sensitivity with methods employing the luminescent substrates of the invention for trypsin or tryptase is at
25 least 2 times, more preferably 3, 4, 5, 6, 7, 8, 9, or 10, or even greater, for instance, at least 15, 20, 25, 30, 40, 50 or 100 times or more, greater than that of an assay employing a conjugate comprising a fluorophore covalently linked to at least one substrate molecule or a functional equivalent thereof. Using a substrate for trypsin, it was found that the limit of detection for a lysyl-aminoluciferin substrate was 3.0 pg while that for the arginine₂-rhodamine-110-based
30 substrate was 12-30 pg. Thus, a trypsin assay that employs an amino-modified aminoluciferin substrate is at least 4 times more sensitive than a corresponding assay with a conjugate comprising rhodamine-110 covalently linked to two functionally equivalent trypsin substrates.

Further provided is a luminescent assay method to determine the activity of a protease that specifically cleaves a substrate comprising arginine or lysine in the presence of one or more
35 test compounds. The method comprises contacting a sample having one or more proteases specific for a substrate comprising arginine or lysine and one or more test compounds with a

mixture comprising luciferase, a tolerance enhancing agent, and an amino-modified aminoluciferase or a carboxyl protected derivative thereof covalently linked via a peptide bond to a substrate comprising arginine or lysine and a tolerance enhancer agent. Luminescence in the sample is then detected. Preferably, the assay is more sensitive than a corresponding assay with a conjugate comprising a fluorophore covalently linked to the substrate or a functional equivalent of the substrate. As trypase is released from activated mast cells in association with inflammatory conditions including allergic reactions such as anaphylactic reactions and allergic rhinitis, and trypsin in stool may be indicative of cystic fibrosis, the methods of the invention is particularly useful for screening test compounds that may be useful for anti-inflammatory therapy.

10 Kits useful in the methods of the invention are also envisioned. Such kits may comprise the amino-modified aminoluciferins or carboxyl protected derivatives of the invention, and instructions for their use, a luciferase, a tolerance enhancing agent and also optionally a buffer for a luminescence reaction.

In another embodiment of the invention, a method is provided for measuring P-450 activity in the presence of one or more test compounds. A reaction mixture comprising one or more P-450 enzymes and one or more test compounds is prepared and incubated for a predetermined time period. Thereafter, the mixture is contacted with a luminogenic molecule and incubated for a predetermined time period. The cytochrome P-450 metabolizes the luminogenic molecule into a substrate for the bioluminescent enzyme in a first reaction. The reaction mixture is then contacted with luciferase and a tolerance enhancing agent. The bioluminescent enzyme then acts on the substrate in a second light emitting reaction. Cytochrome P-450 activity is indirectly determined by measuring the amount of luminescence that is generated from the assay mixture relative to a control mixture. Controls may involve replacement of P-450 enzyme with water or the P-450 buffer, replacement of recombinant P-450 membrane preparation with a similar preparation that lacks P-450 enzyme, elimination of NADPH, or heat denaturation of P-450 enzyme prior to addition of the luciferin substrate. Luminescence can be measured after a predetermined incubation time period or continuously from the time the reaction is initiated. U.S. patent application no. 10/665,314, filed September 19, 2003, entitled "Luminescence-based methods and probes for measuring cytochrome P-450 activity" (assignee: Promega Corp.), incorporated herein in its entirety, and U.S. patent application no. 10/665,314, filed 9/19/03, the disclosure which is hereby incorporated by reference in its entirety, describe luciferase-based assays for determining P-450 activity and useful luminogenic substrates.

P450 activity can be determined using luminogenic molecules that are P450 substrates or a P450 substrate/bioluminescent enzyme pro-substrate, such as, a beetle luciferin or a luciferin derivative. The term "luciferin derivative" as used herein refers to a type of luminogenic molecule or compound having a substantial structure of D-luciferin and maybe a substrate of one

or more cytochrome P450 enzymes and a pro-substrate of luciferase. In the presence of cytochrome P450, the compound is metabolized into luciferin, a substrate of luciferase. In the absence of prior P450 metabolism, some of the compound(s) may bind to luciferase as evidenced by their capacity to inhibit a reaction with luciferin, however, they are not turned over as substrate
5 in light-generating reactions. Without being bound by any theory of operation, it is believed that these compounds are most likely competitive inhibitors of luciferase. Useful, but non-limiting, D-luciferin derivatives are disclosed in U.S. patent application no. 10/665,314, filed 9/19/03, the disclosure which is hereby incorporated by reference in its entirety.

In another embodiment of the invention, a method is provided for measuring the activity
10 of a cytochrome P450 enzyme. A luminogenic molecule that is a P450 substrate and a bioluminescent enzyme pro-substrate can be contacted with one or more cytochrome P450 enzymes and bioluminescent enzyme, either simultaneously or in a stepwise manner, for a predetermined time. In the presence of P450, the luminogenic molecule is metabolized into a substrate for the bioluminescent enzyme in a first reaction. The bioluminescent enzyme then acts
15 on the substrate in a second light emitting reaction. Cytochrome P450 activity can be determined by measuring the amount of luminescence that is generated from reaction mixture relative to a control (e.g., no P450 enzyme). For the P450 reaction to occur, P450 reductase, NADPH and Mg^{+2} are generally present in the system. Similarly, the presence of ATP and Mg^{+2} is generally necessary for firefly luciferase activity but not for *Renilla* luciferase activity. Any suitable
20 concentration of luminogenic molecule may be employed in the reaction mixture. In practicing this invention, the concentration of the luminogenic molecule generally ranges between about 10 nM to 1 mM, preferably in the linear range of the substrate dose response by a particular P450 isoform, most preferably at the K_m for the particular substrate/P450 isoform reaction or at V_{max} for that reaction.

P450 activity can also be determined using luminogenic molecules that are natural
25 coelenterazine and coelenterazine derivatives (collectively referred to as coelenterazines). Coelenterazines are known to luminesce when acted upon by a wide variety of bioluminescent proteins, specifically marine luciferases. Examples of marine luciferases include *Renilla* luciferase, aequorin, *Gaussia* luciferase, *Oplophorus* luciferase, and *Cypridina* luciferase. Useful,
30 but non-limiting, coelenterazines are disclosed in U.S. patent application no. 10/053,482, filed 11/2/01, the disclosure which is hereby incorporated by reference in its entirety. Coelenterazines are available from Promega Corporation, Madison, WI and from Molecular Probes, Inc., Eugene, OR. Coelenterazines may also be synthesized as described for example in Shimomura *et al.*, *Biochem. J.* 261: 913-20, 1989; Inouye *et al.*, *Biochem. Biophys. Res. Comm.* 233: 349-53, 1997;
35 and Teranishi *et al.*, *Anal. Biochem.* 249: 37-43, 1997.

The P450 acts on these coelenterazines in one of two ways. In one reaction pathway, the

luminogenic molecules are P450 substrates and bioluminescent enzyme pro-substrates and do not exhibit the characteristic coelenterazine chemiluminescent (luminescence in the absence of a bioluminescent enzyme, e.g. Renilla-type luciferase). P450 metabolism of the luminogenic molecule in a first reaction generates the substrate for the Renilla luciferase. The Renilla
5 luciferase then acts on the substrate in a second light-emitting reaction. P450 activity is then ascertained by measuring the luminescence of the reaction mixture relative to a control reaction mixture. In the second reaction pathway, coelenterazine or coelenterazine derivatives exhibit chemiluminescence and are substrates for Renilla-type luciferase. P450 metabolism of such a
10 luminogenic molecule results in the loss of chemiluminescence and activity with Renilla-type luciferase. In both types of reaction pathways, P450 activity may be detected either directly by a change in chemiluminescence by the action of the P450 alone or indirectly by a change in bioluminescence from a Renilla-type luciferase. Useful, but non-limiting, coelenterazines are disclosed in U.S. patent application no. 10/053,482, filed 11/2/01, the disclosure which is hereby incorporated by reference in its entirety as well as in U.S. patent application no. 10/665,314, filed
15 9/19/03, the disclosure which is hereby incorporated by reference in its entirety.

In another aspect of this invention, a method for determining P-450 activity in the presence of one or more test compounds is provided. According to this method, a reaction mixture comprising one or more P-450 enzymes, one or more test compounds, and a luminogenic molecule is prepared and incubated for a predetermined time period. The reaction mixture is then
20 incubated for a predetermined time period. The P-450 enzyme metabolizes the luminogenic molecule and converts it into a substrate for the bioluminescent enzyme. Thereafter, the second reaction mixture is contacted with a luciferase and a tolerance enhancing agent for a predetermined time period. The luciferase enzyme acts on the substrate in a second light emitting reaction. Cytochrome P-450 activity is then indirectly determined by measuring the amount of
25 luminescence that is generated from the reaction mixture relative to a control (e.g., no P-450 enzyme). The tolerance enhancing component permits more accurate quantitation of the Cytochrome P-450 activity if the test compound interacts directly with the luciferase instead of or in addition to the Cytochrome P-450.

In yet another embodiment of the invention, methods, compositions and kits are provided
30 for determining the effect of one or more compounds, preferably in a high-throughput screening format, on an ATP generating enzyme activity. The method comprises adding to a sample including ADP, an ATP generating enzyme, and a compound, a composition ("reagent composition") comprising a luciferase enzyme, a tolerance enhancing agent to improve tolerance for compound interference, and optionally an ATPase inhibitor, and detecting luminescence
35 produced in the sample by the conversion of a substrate (luciferin) into a luminescing compound by luciferase. Representative of ATP generating enzymes include, without limitation,

phosphoglycerate kinase or phosphopyruvate kinase. See U.S. Patent No. 6,235,480, issued May 22, 2001 (assignee: Promega Corporation), which is incorporated by reference in its entirety, describing a luciferase-based assay for determining ATP generating enzyme activity. The reagent composition of the present invention comprises a tolerance enhancing agent to improve tolerance
5 for compound interference and/or one or more optional ATPase inhibitors, preferably a detergent, and a non-endogenous ATP-dependent enzyme, wherein the composition is capable of maintaining at least about 30% enzymatic activity for at least about one hour, preferably at least about 2 hours, more preferably at least about 4 hours, compared to its activity just after (0 to 10 minutes) the enzyme is combined with the ATPase inhibitor, and wherein the one or more
10 ATPase inhibitors are present in the composition at a concentration sufficient to collectively reduce ATPase activity endogenous to the sample by at least about 25%, more preferably at least about 30%, 40%, 50%, 60%, 70%, 80%, 90%, 95% or 99% or any increment therein relative to the ATPase activity endogenous to the sample in the absence of the ATPase inhibitor. In preferred embodiments of the invention, the non-endogenous ATP-dependent enzymes are
15 luciferases.

In a preferred embodiment, the components of the reagent composition of the invention can be supplied as two parts that are admixed shortly before use: (1) a part comprising luciferase and (2) a part comprising a tolerance enhancing agent for improving luciferase tolerance against interference from one or more compounds and one or more optional ATPase inhibitors. The
20 tolerance enhancing agent may have ATPase inhibition activity and thus may be used in place of a separate ATPase inhibitor. The presence of an ATPase inhibitor is desirable with cell lysate samples. The luciferase component may further comprise luciferin and preferably is lyophilized. The luciferase component optionally comprises excipients for lyophilization, protein (luciferase) stabilizer, magnesium (or alternative cation), and a magnesium chelator (or alternative cation
25 chelator). The ATPase inhibitor component may further comprise a buffer, divalent cation metal chelators, magnesium (or alternative cation), a defoaming agent, anti-ATP-generating enzyme agents (e.g., NaF), an enzyme stabilizer (e.g., THESIT) and an agent for while in the presence of an ATPase inhibitor (and, optionally, kinase inhibitors) that stabilizes the amount of ATP present in the sample results in a reliable and efficient method for detecting and quantifying cellular ATP
30 for extended periods of time.

C. Luciferases

Luciferase enzymes, whose catalytic products include light, offer high sensitivity, a detectable product and enable easy measurement of ATP or other molecule such as luciferin or
35 luciferin derivative. However, any luminescence-producing enzyme may be used in the methods and compositions of the present invention.

At their most basic level, luciferases are defined by their ability to produce luminescence. More specifically, a luciferase is an enzyme that catalyzes the oxidation of a substrate, luciferin, thereby producing oxyluciferin and photons.

To date, five classes of luciferases have been identified (Jones et al., 1999; Thomson et al., 1997). Of these, beetle luciferases, such as that of the common firefly (family Lampyridae), form a distinct class with unique evolutionary origins (McElroy et al., 1969; White et al., 1969; White et al., 1975). Beetle luciferases are often referred to as firefly luciferases in the literature; however, firefly luciferases are actually a subgroup of the beetle luciferase class. Beetle luciferases may be purified from the lanterns of the beetles themselves or from protein expression systems well known in the art (Baldwin and Green, 2000; Beny and Dolivo, 1976, Branchini et al 1980; Filippova et al., 1989).

Beetle luciferases, particularly firefly luciferase from the North American firefly *Photinus pyralis*, are well known in the art. The *P. pyralis* luciferase (LucPpy) consists of approximately 550 amino acids of 61 kDa as calculated by the protein encoded by the nucleotide sequence of the gene. Another example of a firefly luciferase is *Photuris pennsylvanica* firefly luciferase (LucPpe2; 545 amino acid residues, GenBank 2190534, (Ye et al., 1997)). Mutant luciferases derived from LucPpe2 (e.g., LucPpe2m78 (also known as 78-OB10), SEQ ID NO: 1; LucPpe2m90 (also known as 90-1B5), SEQ ID NO: 2, LucPpe2m133 (also known as 133-1B2), SEQ ID NO: 3, LucPpe2m146 (also known as 146-1H2), SEQ ID NO: 4 can be used in methods of the invention. In addition, any luciferase that meets the limitations set forth herein may be used in the composition, method and kits of the invention. The method of making LucPpe2m78, LucPpe2m90, LucPpe2m133, and LucPpe2m146 is disclosed in PCT/US99/30925.

In certain embodiments, isolated and/or purified luciferases can be used in the present invention. Contaminant components of its natural environment are materials that would typically interfere with diagnostic or therapeutic uses for the luciferase, and may include enzymes, hormones, and other proteinaceous or non-proteinaceous materials. One technique to ascertain purity is applying SDS-PAGE analysis under non-reducing or reducing conditions using Coomassie blue or silver stain. Isolated luciferase includes luciferase *in situ* within recombinant cells, since at least one component of the luciferase natural environment will not be present. Luciferases can be isolated from biological specimens that produce luciferase or from a cell that expresses an exogenous polynucleotide encoding a desired luciferase (e.g., a nucleotide encoding 78-OB10, 90-1B5, 133-1B2, or 146-1H2 (SEQ ID NOs 5-8, respectively)). Such techniques are well known to those of skill in the art.

The naturally-occurring substrate for beetle luciferases is firefly luciferin, a polyheterocyclic organic acid, D-(-)-2-(6'-hydroxy-2' -benzothiazolyl)- Δ^2 -thiazolin-4-carboxylic acid (luciferin). Luciferin may be isolated from nature (e.g. from fireflies) or synthesized.

Synthetic luciferin can have the same structure as the naturally occurring luciferin or can be derivatized, so long as it functions analogously (Bowie et al., 1973, Branchini, 2000; Craig et al., 1991; Miska and Geiger, 1987; Yang and Thomason, 1993). Examples of derivatives of luciferin include D-luciferin methyl ester, D-luciferyl-L-phenylalanine, D-luciferyl-L-N α -arginine, D-luciferin-O sulphate and D-luciferin-0-phosphate (Miska and Geiger, 1987), esters of luciferases that are hydrolyzed or acted upon by esterases to luciferin by components in a sample (Craig et al., 1991; Yang and Thomason, 1993). Other examples of useful luciferin analogs include naphthyl- and quinolyluciferin, which emit light in the green and red light spectra respectively (Branchini et al., 1989). There are multiple commercial sources for luciferin (*e.g.*, Promega Corp. Madison, WI, Molecular Probes, Eugene, OR).

The beetle luciferase-catalyzed reaction that yields luminescence (the luciferase-luciferin reaction) involves firefly luciferin, adenosine triphosphate (ATP), magnesium, and molecular oxygen. In the initial reaction, the firefly luciferin and ATP react to form luciferyl adenylate with the elimination of inorganic pyrophosphate. The luciferyl adenylate remains tightly bound to the catalytic site of luciferase. When this form of the enzyme is exposed to molecular oxygen, the enzyme-bound luciferyl adenylate is oxidized to yield oxyluciferin in an electronically excited state. The excited oxidized luciferin emits light on returning to the ground state.

It is contemplated that the ATP function of the reaction can be performed by an ATP analogue (*e.g.*, dATP). It is also contemplated that other ions can serve as substitutes for magnesium ions (*e.g.*, Mn^{2+} or Ca^{2+}). Additionally, oxygen is a reactant of the reaction. Therefore, the reaction should not be conducted under anaerobic conditions. However, it is not generally necessary in practicing the invention to provide oxygen over and above that present in the air. Reactions can take place in closed vessels, provided there is sufficient oxygen in the reaction solution.

Most luciferase-luciferin reactions generate a flash of light that is short lived. However, some of the luciferases that can be used in methods of the invention, *e.g.*, LucPpe2ml46 and LucPpe2m90 luciferases, under the conditions of the invention generate a "glow-type" luminescent signal with less than 50% loss of luminescence per hour after the reagent composition is combined with the sample.

Any luciferase, luciferase variant, luciferase fragment, or variant luciferase fragment that retains the ability to generate luminescence when used in the reagent composition of the present invention and does not prevent the reagent composition from meeting the stability requirements of the present invention, can be used in the present invention.

A full length luciferase variant will have at least about 80% amino acid sequence identity, preferably at least about 81% amino acid sequence identity, more preferably at least about 82%, 83%, 84%, 85%, 86%, 87%, 88%, 89%, 90%, 91%, 92%, 93%, 94%, 95%, 96%, 97%, 98%

amino acid sequence identity and most preferably at least about 99% amino acid sequence identity with a full-length native sequence luciferase sequence and retain the ability to generate luminescence. Ordinarily, variant luciferase fragments are at least about 50 amino acids in length, often at least about 60 amino acids in length, more often at least about 70, 80, 90, 100, 150, 200, 5 300, 400, 500 or 550 amino acids in length, or more and retain the ability to generate luminescence. A luciferase, luciferase fragment, luciferase variant or variant luciferase fragment may be fused to other non-luciferase amino acid sequences and still be functional in the invention.

Full length luciferase, fragments of luciferase, variants of luciferase, and variant fragments of luciferase enzyme used in the compositions and methods of the present invention may be 10 purified from a native source or prepared by a number of techniques, including (1) chemical synthesis, (2) enzymatic (protease) digestion of luciferase, and (3) recombinant DNA methods. Chemical synthesis methods are well known in the art, as are methods that employ proteases to cleave specific sites. To produce segments of luciferase protein segments of luciferase or luciferase variants can be made and then expressed in a host organism, such as *E. coli*. Methods 15 such as endonuclease digestion or polymerase chain reaction (PCR) allow one of skill in the art to generate an unlimited supply of well-defined fragments. Preferably, luciferase fragments share at least one biological activity with native luciferase, as well as catalytic activity, although the level of activity may vary from that of the native luciferase.

Any type of amino acid substitution, insertion or deletion, or combination thereof may be 20 used to generate a variant luciferase. However, a luciferase with a conservative amino acid substitution is more likely to retain activity. Useful conservative substitutions are shown in Table A "Preferred substitutions." Conservative substitutions whereby an amino acid of one class is replaced with another amino acid of the same type fall within the scope of the invention if the substitution does not impair luciferase activity.

Table A; Preferred substitutions

Original residue	Exemplary substitutions	Preferred substitution
Ala (A)	Val, Leu, Ile	Val
Arg (R)	Lys, Gin, Asn	Lys
Asn (N)	Gln, His, Lys, Arg	Gin
Asp (D)	Glu	Glu
Cys (C)	Ser	Ser
Gln (Q)	Asn	Asn
Glu (E)	Asp	Asp
Gly (G)	Pro, Ala	Ala
His (H)	Asn, Gln, Lys, Arg	Arg
Ile (I)	Leu, Val, Met, Ala, Phe, Norleucine	Leu
Leu (L)	Norleucine, Ile, Val, Met, Ala, Phe	Ile
Lys (K)	Arg, Gln, Asn	Arg
Met (M)	Leu, Phe, Ile	Leu
Phe (F)	Leu, Val, Ile, Ala, Tyr	Leu
Pro (P)	Ala	Ala
Ser(S)	Thr	Thr
Thr (T)	Ser	Ser
Trp (W)	Tyr, Phe	Tyr
Tyr (Y)	Trp, Phe, Thr, Ser	Phe
Val (V)	Ile, Leu, Met, Phe, Ala, Norleucine	Leu

Non-conservative substitutions that affect (1) the structure of the polypeptide backbone, such as a β -sheet or α -helical conformation, (2) the charge or (3) hydrophobicity, or (4) the bulk of the side chain of the target site might modify luciferase function. Residues are divided into groups based on common side-chain properties as denoted in Table B. Non-conservative substitutions entail exchanging a member of one of these classes for another class.

TABLE B

Class	Amino acids
Hydrophobic	Norleucine, Met, Ala, Val, Leu, Ile
neutral hydrophilic	Cys, Ser, Thr
Acidic	Asp, Glu
Basic	Asn, Gln, His, Lys, Arg
disrupt chain conformation	Gly, Pro
Aromatic	Trp, Tyr, Phe

Variant luciferase genes or gene fragments can be made using methods known in the art such as oligonucleotide-mediated (site-directed) mutagenesis, alanine scanning, and PCR mutagenesis. Site-directed mutagenesis (Carter, 1986; Zoller and Smith, 1987), cassette mutagenesis, restriction selection mutagenesis (Wells et al, 1985) or other known techniques can be performed on the cloned DNA to produce the luciferase variant DNA (Ausubel et al., 1987; Sambrook, 1989).

1. *Selected luciferases*

Any luciferase, luciferase fragment, or variants thereof that emits photons upon oxidation of a substrate may be used in the present invention. Other desirable characteristics, such as thermostability, chemostability, and signal stability, are also contemplated. In addition, the luciferase may be fused to another amino acid sequence and still be functional in the present invention. Such enzymes may be synthesized *in vitro* or isolated from other organisms.

Naturally occurring luciferases can be found, for example, in bacteria, unicellular algae, coelenterates, beetles (other than *P. pennsylvanica*), fishes, and other organisms. Chemically, all luciferases involve exergonic reactions of molecular oxygen with different luciferins, resulting in photon production (Hastings, 1996; Hastings and Wilson, 1976; Wilson and Hastings, 1998, Wood et al., 1989).

The use of a luciferase other than that from beetles requires an appropriate luciferin molecule that upon oxidation generates a chemically and electrically unstable intermediate or a detectable enzymatic product. Other substrates may be used, as well as other ATP-dependent enzymes that produce a detectable enzymatic product. Detectable products include photons, radioactively-labeled products, insoluble or soluble chromogens, or other products that can be detected visually or through the use of devices.

In certain embodiments, luciferases of the invention possess catalytic activity that depends on ATP and emits photons. In other embodiments, luciferases of the invention have enhanced chemostability in the presence of ATPase inhibitors relative to the level of the *P. pyralis*

luciferase (LucPpy) chemostability in the same reaction conditions. In some embodiments, luciferases used in the compositions and methods of the invention generate a stable signal, i.e., they yield enhanced duration of luminescence in a luciferase reaction defined as less than 50% loss of luminescence per hour relative to the luminescence at the time the luciferase reaction was initiated. In still other embodiments, luciferases of the invention can allow for multiple analyses of a sample over time or analysis of many samples over time, one hour after the luciferase reaction is initiated, more preferably two hours and most preferably four hours or more. Optionally, the luciferases used in the compositions and methods of the invention have enhanced thermostability properties. An exemplified luciferase is LucPpe2m146 (SEQ ID NO:4).
5
10 Additional examples of enzymes useful in the invention include, but are not limited to, LucPpe2m78 (SEQ ID NO:1), LucPpe2m90 (SEQ ID NO: 2), and LucPpe2m133 (SEQ ID NO:3).

The luciferases LucPpe2m78 (SEQ ID NO:1), LucPpe2m90 (SEQ ID NO:2), LucPpe2m133 (SEQ ID NO:3) and LucPpe2m146 (SEQ ID NO.4) were generated from a mutant of *P. pennsylvanica* (T249M). The nucleic acid sequence encoding this protein was subjected to mutagenic methods including recursive mutagenesis followed by screens for thermostability, signal stability, and substrate binding and is fully described by Wood and Hall (WO 9914336, 1999).
15

2. Chemostable luciferases

20 "Chemostable luciferases" as used herein, defines luciferases that retain activity in the presence of compounds or conditions when those compounds or conditions typically inhibit ATPases and disrupt the function of non-chemostable luciferases such as LucPpy. The above identified luciferases LucPpe2m78 (SEQ IDNO: 1), LucPpe2m90 (SEQ ID NO:2), LucPpe2m133 (SEQ ID NO:3) and LucPpe2m146 (SEQ ID NO:4), were found herein to have enhanced chemostability to ATPase inhibitors.
25

Thus, in certain embodiments, luciferases of the invention include those that maintain at least about 30% (preferably at least about 60%, 70%, 80%, 90%, 95%, 99%) enzymatic activity as measured by luminescence at least one hour (preferably at least two hours, more preferably at least four hours) after contact with an amount of ATPase inhibitor, preferably a detergent, e.g., cationic detergent (preferably DTAB or BDDABr), anionic detergent (preferably deoxycholate or SDS) or zwitterionic detergent (preferably sulfobetaine 3-10) or combination thereof sufficient to collectively reduce ATPase activity endogenous to a sample by at least about 25% (preferably at least about 30%, even more preferably at least about 40%, 50%, 60%. 70%, 80%, 90%, 95%, 99% or any increment therein) relative to the sample's ATPase activity in the absence of the ATPase inhibitor.
30
35

The chemostability of an enzyme also may be indicated by the rate of decline of its activity over time. For example, shortly (0 to 10 minutes) after mixing the ATPase inhibitor and the luciferase, thereby creating the reagent composition, at several subsequent time points an aliquot of the reagent composition is added to a sample and relative light unit (rlu) measurements are obtained shortly thereafter. These measurements may be graphed to determine a trend of decline in enzyme activity in the reagent composition over time.

Chemostable luciferases (*e.g.*, Ppe2m78, Ppe2m90, Ppe2m133, and Ppe2m146) also retain activity in multi-detergent solutions. Specifically, solutions containing 0.01%, preferably 0.05%, 0.1%, 0.2%, 0.3%, 0.4%, 0.5%, 0.6%, 0.7%, 0.8%, 0.9%, most preferably 0.25% CHAPS (3-[[3-Cholamidopropyl]dimethylammonio]-1-propanesulfonate) with at least 0.01%, preferably 0.05%, 0.1%, 0.2%, and most preferably 0.3% or 1.0% BDDABr, taurocholic or tauroolithocholic acids, or DTAB, or 0.01%, preferably 0.05%, 0.1%, 0.2%, 0.3%, 0.4%, 0.5%, 0.6%, 0.7%, 0.8%, 0.9%, most preferably 1.0% of taurocholic or tauroolithocholic acids with at least 0.01%, preferably 0.05%, 0.1%, 0.2%, and most preferably 0.3% or 1.0% BDDABr, DTAB, or CHAPS. Other multi-detergent solutions in which LucPpe2m78, LucPpe2m90, LucPpe2m133 and LucPpe2m146 retain activity include 0.01%, preferably 0.05%, most preferably 0.1% TRITON X-100 with at least 0.01%, preferably 0.05%, 0.1%, 0.2%, 0.5%, most preferably 1.0% BDDABr, DTAB, or CHAPS, or 0.01%, preferably 0.05%, 0.1%, 0.2%, 0.3%, 0.4%, 0.5%, 0.6%, 0.7%, 0.8%, 0.9%, most preferably 1.0% of taurocholic or tauroolithocholic acids with at least 0.01%, preferably 0.05%, 0.1%, 0.2% and most preferably 0.3 or 1.0% BDDABr, DTAB, or CHAPS; or 0.05%, 1.0%, 2.0%, 4.0%, preferably 2% polyethylene glycol 400 dodecyl ether (THESIT), with at least 0.05%, preferably 0.1%, 0.2% and most preferably 0.3% or 1.0% BDDABr, DTAB, or CHAPS.

3. *Thermostable luciferase*

In some embodiments, a thermostable luciferase that produces luminescence or other thermostable ATP-dependent enzyme that produces a detectable signal can be used in a method of the invention, especially in samples that are treated with heat immediately prior to ATP detection. A thermostable polypeptide remains active at temperatures that inactivate or denature other proteins. The LucPpe2m78, LucPpe2m90, LucPpe2m133 and LucPpe2m146 enzymes display increased thermostability compared to luciferases found in nature or encoded from polynucleotides isolated from nature.

D. Kits

When the invention is supplied as a kit, the different components of the composition may be packaged in separate containers and admixed prior to use. The different components of the invention may comprise subsets of these parts and may be combined in any way that either

facilitates the application of the invention or prolongs storage life.

The following sections are intended to provide certain examples of kit components. One of skill in the art will recognize that the actual components provided in a kit of the invention will vary depending on which particular assay is to be performed.

5

1. *Luciferase-luciferin component*

All luciferases, luciferase variants, luciferase fragments and variant luciferase fragments that catalyze an ATP-dependent reaction and generate luminescence are contemplated for use in the invention. Some embodiments eliminate the luciferin; for example, allowing a user to supply a luciferin of his/her choice, or the luciferin may be provided separately. The type of luciferin provided may vary but it must be a substrate for the type of luciferase provided.

In one embodiment, a kit supplies the luciferase as an anhydrous preparation. Anhydrous preparations of luciferase may be lyophilized, in which water is removed under vacuum, freeze-dried, crystallized, or any other method that removes water that does not inactivate luciferase. Excipients that bulk the preparation and stabilize luciferase, such as serum albumins or Prionex, may also be included. In other embodiments, luciferase may be suspended in an aqueous composition comprising glycerol or other solvent in which the enzyme is stable. The skilled artisan can easily determine the amounts of the various constituents that work in the compositions and methods of the invention.

20

2. *Tolerance enhancing agents*

A luminescence assay provides correlation between a biological or biochemical process and light output. Interference by a compound may disrupt or alter correlation to some degree. A "tolerance enhancing agent" of the invention can substantially protect luciferase activity by minimizing the effect of an interfering compound in a luciferase-based assay system by at least about 10%, preferably about 30, 50, 60, 70, 80, 90, 95, 96, 97, 98, 99 and most preferably about 100%, relative to a system without interfering compound and bring the assay closer to correlation. These tolerance enhancing agents include, without limitation, detergents (e.g., cationic, anionic, non-ionic and/or zwitterionic) and non-detergents. Examples of non-detergent tolerance enhancing agents include, without limitation, polyethylene glycol, polyvinyl pyrrolidone, and cyclodextrins. The selection and amount used of a particular tolerance enhancing agent suitable for a particular luciferase-based assay may be determined by a number of ways, including titrating various concentrations of agent in a luciferase-based assay that includes a known luciferase inhibitor and comparing the luminescence obtained from such an assay against a second assay that employs no or reduced amounts of tolerance enhancing agents. Any suitable general luciferase inhibitor may be used as a standard inhibitor agent for identifying and screening tolerance

35

enhancement agents. The example below provides a representative procedure for screening of several tolerance enhancement agents and use of a known general luciferase inhibitor, isoliquirtigenin, as a standard for screening the agents..

5 In practicing this invention, one or more tolerance enhancing agents may be used in a luciferase-based assay to determine the effect of one or more compounds on enzyme or cellular activity. The amount of tolerance enhancing tolerance enhancing agents that is present in the reagent is such that it is effective to at least substantially protect the activity of the luciferase from interference from one or more compounds in a screening procedure. Any suitable cationic, anionic, zwitterionic, or non-ionic detergent may be used in this invention so long as it functions
10 to enhance luciferase tolerance against one or more compounds in a screening procedure, particularly in high throughput screening procedure. For instance, suitable, but non-limiting, examples of detergents include Tergitol (nonionic); Brij 35 (nonionic); Brij 58 (nonionic); Triton X-100 (nonionic); Triton X-305 (nonionic); Triton N101(nonionic); Chaps (zwitterionic); Chapso (zwitterionic); Bigchap (nonionic); Thesit (nonionic); Pluronic L64 (nonionic); Rhodasurf 870;
15 Chemal LA-9; Sulfonyl 465; Deoxycholate (anionic); and CTAB (cationic); Pierce CO8; Pierce C10; and Tergitol®, e.g., Tergitol NP-9®. For luciferase-based assays for determining enzyme activity in the presence of one or more test compounds, Tergitol (for P-450 and kinase activity), Thesit (for kinase), CHAPS (for kinase activity) are preferred.

20 3. *ATPase inhibitor component*

In one embodiment, particularly useful when ATP concentrations of a sample are to be measured, the kit comprises a component containing one or more ATPase inhibitors within a solution optionally containing other functional components, such as buffers, defoamers, enzyme stabilizers, and the like. This component may be supplied as a working solution or as a
25 concentrate. The ATPase inhibitor component (e.g., CTAB) may be packaged separately. The ATPase inhibitor may be any of those described herein above. This component may further comprise agents that chelate metal ions that may interfere with the luciferase-luciferin reaction (e.g. EDTA, EGTA), magnesium (preferably supplied as a salt, such as sulfate or chloride; or other functionally equivalent cation), defoaming agents, and inhibitors of ATP generating enzyme
30 (e.g. NaF). Buffers that maintain pH of the working solution, e.g. citrate or MES (which may be supplied as a salt, such as sodium or free acid or base) or any other appropriate buffer may be used. Instructional materials may also be enclosed in the kit as well as materials that may act as standards or controls, depending on the purpose of the kit.

One aspect of the invention is an ATPase inhibitor, preferably a detergent that inhibits
35 ATPases, more preferably a detergent with a charged group, e.g., cationic detergent (preferably

DTAB or BDDABr), anionic detergent (preferably deoxycholate or SDS) or zwitterionic detergent (preferably sulfobetaine 3-10). Such inhibitors prevent ATPases endogenous to the sample from processing ATP to adenosine diphosphate (ADP) and adenosine monophosphate (AMP) before the luciferase is allowed to utilize the ATP in the sample for the luciferase-luciferin
5 reaction. ATPase inhibitors may inactivate ATPases directly or indirectly. They may bind to ATPases, either in the active sites, thus preventing substrate binding, or denature ATPases, such as by denaturing detergents, or they may selectively sequester ATPases from their substrates.

One embodiment of the present invention uses cationic detergents such as DTAB or BDDABr detergents that act as ATPase inhibitors. However, other ATPase inhibitors are
10 contemplated, such as other cationic detergents, anionic detergents (*e.g.*, SDS and deoxycholate) and zwitterionic detergents (*e.g.*, sulfobetaine 3-10).

For DTAB or BDDABr the concentration in the reagent composition is preferably in the range of about 0.02% to about 5.0%, more preferably about 0.05%, still more preferably about 0.1%, 0.2%, 0.3%, 0.4%, 0.5%, 0.6%, 0.7%, 0.8%, 0.9%, 1.0%, 1.1%, 1.2%, 1.3%, 1.4% and
15 1.5% and most preferably to a final concentration of about 1.0% in the reagent composition.

Other non-cationic detergent ATPase inhibitors are contemplated for inclusion in the reagent composition; their requirements are that they, like DTAB, preferably inhibit at least about 25%, more preferably at least about 30%, 40%, 50%, 60%, 70%, 80%, 81%, 82%, 83%, 84%, 85%, 86%, 87%, 88%, 89%, 90%, more preferably at least about 91%, 92%, 93%, 94%, 95%,
20 96%, 97%, 98%, 99% and most preferably about 100% of endogenous ATPase activity in a sample when present in a reagent composition wherein the reagent composition is capable of maintaining at least 30%, 40%, 50%, 60%, 70%, 80%, 81%, 82%, 83%, 84%, 85%, 86%, 87%, 88%, 89%, 90%, more preferably at least about 91%, 92%, 93%, 94%, 95%, 96%, 97%, 98%,
25 99% and most preferably about 100% activity, as measured by luminescence after the reagent composition is combined with the sample, for at least one hour, more preferably at least 2 hours compared to the reagent composition's activity just after the luciferase is combined with the ATPase inhibitor. Potentially suitable non-cationic detergents that function as ATPase inhibitors include anionic detergents (preferably SDS and deoxycholate), zwitterionic detergents (preferably sulfobetaine 3-10). The concentration of a particular ATPase inhibitor will vary depending on the
30 inhibitor used, and to some extent, the sample being analyzed. One of skill in the art is familiar with methods to determine the appropriate concentration of an ATPase inhibitor for inclusion in the reagent composition; for example, they may examine luciferin-luciferase derived signals over time, comparing those samples that have varying concentrations of a candidate ATPase inhibitor to those samples containing no known ATPase inhibitors.

35 It is fully anticipated that the most preferred concentration and even the concentration

range functional in the methods of the invention will vary for different detergents. For example, SDS concentrations functional in the methods of the invention are about 0.002%. The functional concentration range for a detergent used in the present invention may readily be determined by one of skill in the art using the methods disclosed herein.

5 It is contemplated that some ATPase inhibitors, at some of the concentrations useful in the invention, may be insoluble or have low solubility in aqueous solutions. These compounds may first be dissolved in an organic solution (e.g., dimethyl sulfoxide or dimethylformamide) and then diluted into the reagent composition for use in the composition and methods of the invention.

4. *Inhibitors of ATP-generating enzymes*

10 In some samples, enzymes such as kinases may be active, allowing for continued production of ATP. Because the ATP concentration is determined at a specific time, if such enzymatic activity is left unchecked, then an over-estimation of the ATP concentration will be made. To counter such ATP-generating activity where an end-point analysis is desired, inhibitors of ATP production can be used. For end-point analysis, inactivation of the kinase reaction can be
15 advantageous because it ensures a more stable luminescent signal. Although the action of a specific inhibitor may be incompletely understood, their usefulness is not obviated. Examples of useful compounds include NaF, which is useful at concentrations of at least 1 mM, preferably 2 mM to 100 mM or any increment therein; 2 mM is most preferred. Any such inhibitor may be used, however, if it does not adversely affect luciferase so as to take it outside the utility of the
20 invention. One of skill in the art will know how to determine the appropriate concentration of such an inhibitor, whether the inhibitor is novel or well-known. Other inhibitors of ATP generating enzymes include, but are not limited to, vanadate, paranitrophenylphosphate and dichloroacetic acid (Kiechle et al., 1980).

5. *Buffers*

25 Any buffers that maintain suitable pH for the working solution and do not interfere with the luciferase-luciferin reaction are contemplated. The preferred pH range is between about pH 4.5 and about pH 9.0, more preferably between about pH 6.0 and about pH 8.0. For P-450 activity measurements the luciferase assay is performed at about pH 8.4. In addition to MES and citrate buffers, other buffers, such as phosphate buffered saline (PBS), Tris, N-(2-
30 Hydroxyethyl)piperazine-N'-(2-ethanesulfonic acid) (HEPES), piperazine-I,4-bis(2-ethanesulfonic acid) (PIPES), borate, and any other buffer known to those of skill in the art may be suitable. Selection of appropriate buffers depends on pH buffering capacity and interaction with the luciferase-luciferin reaction.

6. *Defoamers*

35 Defoaming agents are desirable to prevent foam from interfering with the detection of

bioluminescence, especially in applications that quantify luminescence. Such agents as MAZU® (BASF) may be organic or silicone based. Selection of defoamers depends on their ability to eliminate foam without interfering with the luciferase-luciferin reaction.

7. *Cations*

5 Cations may also be included when necessary, for example in the beetle luciferase-luciferin reaction, which is dependent not only on ATP, but also on magnesium ions. To assure luciferase activity in such cases, magnesium may be exogenously supplied. In addition to magnesium sulfate, other salts of magnesium are contemplated, such as magnesium chloride, magnesium gluconate, magnesium acetate, magnesium bromide, magnesium carbonate, etc. In
10 any case, the magnesium complex must dissociate to make Mg^{2+} ions available to the luciferase and not interfere with the luciferase-luciferin reaction. One of skill in the art is aware that other cations may be functional in place of magnesium. These include calcium and manganese.

In some applications, endogenous magnesium should be sufficient, in which cases exogenous magnesium could be eliminated.

15 8. *Stabilizing agents*

While resistant to the action of nonionic and low concentrations of zwitterionic detergents (Simpson and Hammond, 1991), native firefly luciferase is inactivated by cationic detergents, such as benzalkonium chloride, benzethonium chloride, CTAB (cetyltrimethylammonium), DTAB (dodecyltrimethylammonium bromide), and methylbenzethoniumchloride (Simpson and
20 Hammond, 1991). Where enhanced luciferase stability is desirable, a stabilizing agent can be provided in a kit.

The stabilizing agent can be any compound that stabilizes a luciferase from degradation. Suitable stabilizing agents include proteins (such as bovine serum albumin or gelatin) or detergents (preferably non-ionic detergents, most preferably THESIT).

25 9. *Other agents*

Other agents that may be included in a kit include agents that are known to enhance the duration of luminescence resulting from a luciferase reaction, such as Co-enzyme A (Co A), thiol reagents, such as dithiothreitol and β mercaptoethanol (Wood, US 5,283,179, 1994; Wood, US 5,650,289, 1997), metal ion chelators such as EDTA to prolong the signal and protease inhibitors
30 (Schemrer, US 5,618,682, 1997; Scheirer, US 5,866,348, 1999) or high concentrations of salts (Van Lune and Trer Wiel, WO 00/18953, 2000).

10. *Other kit contents*

Kits may also include reagents in separate containers that facilitate the execution of a specific test, such as cell viability, cytotoxicity, cell proliferation, or determination of ATP
35 concentration. For example, ATP may be supplied so that standard curves may be determined or-

to be used as internal controls. Also, a luciferin may be supplied so that a luciferin standard curve may be determined. The kit may supply a sample-gathering component such as a membrane, filter or swab.

11. *Containers or vessels*

5 The reagents included in the kits can be supplied in containers of any sort such that the life of the different components are preserved, and are not adsorbed or altered by the materials of the container. For example, sealed glass ampules may contain lyophilized luciferase or buffer that have been packaged under a neutral, non-reacting gas, such as nitrogen. Ampules may consist of any suitable material, such as glass, organic polymers, such as polycarbonate, polystyrene, etc.,
10 ceramic, metal or any other material typically employed to hold reagents. Other examples of suitable containers include simple bottles that may be fabricated from similar tolerance enhancing agents as ampules, and envelopes, that may consist of foil-lined interiors, such as aluminum or an alloy. Plastic containers with screw tops or glass containers with rubber stoppers may also be used. Other containers include test tubes, vials, flasks, bottles, syringes, or the like. Containers
15 may have a sterile access port, such as a bottle having a stopper that can be pierced by a hypodermic injection needle. Other containers may have two compartments that are separated by a readily removable membrane that upon removal permits the components to mix. Removable membranes may be glass, plastic, rubber, etc.

12. *Instructional materials*

20 Kits may also be supplied with instructional materials. Instructions may be printed on paper or other substrate, and/or may be supplied as an electronic-readable medium, such as a floppy disc, CD-ROM, DVD-ROM, Zip disc, videotape, audio tape, etc. Detailed instructions may not be physically associated with the kit; instead, a user may be directed to an Internet web site specified by the manufacturer or distributor of the kit, or supplied as electronic mail. In a
25 preferred embodiment, the instructions instruct the user to combine the luciferase with the tolerance enhancer before adding the reagent composition to a sample or to combine the tolerance enhancer with the non-luminogenic reaction before adding the luciferase to this reaction.

E. Reagent Composition Activity

30 To measure luminescence and thereby determine the reagent composition activity, the relative light unit (RLU) value generated by the luciferase reaction at a timepoint of interest after the reagent composition is combined with a sample may be measured. For example, an RLU value may be obtained by measuring the resulting luminescence from a sample with a known concentration of ATP (in the case where kinase activity is being measured) or substrate (in the
35 case where protease or P-450 activity is being measured) combined with the reagent composition

just after (0-10 min) the component comprising the tolerance enhancer is added to the component comprising the luciferase thereby creating the reagent composition. This is considered 100% activity (uninhibited) under those conditions. If, after combining a compound known to inhibit luciferase (for example, isoliquiritigenin) with the luciferase reaction, the luminescence decreases
5 in intensity, then the relative protection bestowed by a tolerance enhancing agent is equivalent to the relative proximity of the intensity to the uninhibited luminescence. For example, if isoliquiritigenin inhibits luminescence in a reaction by 200-fold in the absence of a tolerance enhancing agent, but only inhibits the luminescence by 100-fold in the presence of a compound, then that compound is a tolerance enhancing agent and it exerts a relative protection of 50%.

10 In practicing this invention, a reagent composition is generally combined with a sample for the purpose of detecting a product such as ATP or the occurrence of a biospecific event such as enzyme inhibition or activation. Typically, the reagent composition comprises a luciferase and a tolerance enhancement agent to protect luciferase activity from interference by one or more compounds that may inhibit or interact with the luciferase. Ambient oxygen is typically
15 sufficient. Optional ingredients may be included in the reagent composition, depending on the type of assay being conducted. For assays for detecting and/or quantitating ATP detection, the reagent composition includes an ATP-dependent luciferase, a tolerance enhancement agent, luciferin (in saturating or sub-saturating concentrations), and a divalent cation (preferably Mg⁺²). Buffer and other suitable ancillary components such as ATPase and/or enzyme stabilizers may be
20 present as well.

For assays based on luciferin detection, ATP-dependent or ATP-independent luciferases are generally used. Thus, in one embodiment of the invention involving a one step assay, the reagent composition includes an ATP-dependent luciferase, a luciferase pro-substrate, a tolerance enhancement agent, ATP (saturating or sub-saturating concentration), and a divalent cation
25 (preferably Mg⁺²). In an alternative embodiment involving a two step assay, the reagent includes ATP-dependent luciferase, ATP, and divalent cation. The luciferase pro-substrate is kept separate from the reagent and added to the sample prior to addition of the reagent composition. In another embodiment, the reagent composition includes an ATP-independent luciferase and a tolerance enhancement agent, and a luciferase pro-substrate such as coelenterazine or
30 coelenterazine derivative. ATP is not needed with ATP-independent luciferases. In an alternative embodiment involving a two step assay, the reagent includes ATP-independent luciferase, ATP, and divalent cation. The luciferase pro-substrate is kept separate from the reagent and added to the sample prior to addition of the reagent composition. Buffer and other suitable ancillary components such as ATPase inhibitor and/or enzyme stabilizers may be present as well.

35

F. Detecting and quantifying the products of the luciferase reaction

A luciferase reaction results in the generation of light ("luminescence"). Users may simply visually inspect sample reactions to ascertain the production of light. However, more sensitive instrumentations allow not only detection of faint signals, but also quantification of the light signal. Also contemplated are reactions in which non-light products are measured, according to the nature of the products. Any assay that results in a luminescent signal may benefit from the present invention. Appropriate instruments and methods for such products will be apparent to the skilled artisan.

In all cases in which light is detected, specialized instruments, such as luminometers, can read the light product of a luciferase-luciferin reaction. Any instrument that can detect light of the wavelengths emitted by the luciferase reaction may be used. Such instruments may read samples singularly, or in high-throughput screens, may read many samples housed in the wells of a microwell plates (6, 24, 48, 96, 384, 1536, and so on, well formats). Clearly, the devices used to measure the emitted light do not limit the invention. Other devices that can be used include scintillation counters (Nguyen et al., 1988) or instruments invented or adapted to be sensitive to luminescence, such as photometers (Picciolo, et al, 1977). Photographic film or X-ray film may also be used to detect luminescence. In addition, a user may visually inspect a sample to qualitatively evaluate luminescence.

G. Uses for luciferase reactions

The invention is drawn to methods, compositions and kits that are used to effectively and accurately detect and quantify ATP or luciferin levels

The invention comprises the addition of a single composition (reagent composition) that comprises a luciferase, and a tolerance enhancing agent and then detecting luminescence. The addition of a tolerance enhancing agent of the invention can minimize the effect on luciferase of a compound, said compound being tested against a target activity or component (e.g., CYP450, protease, kinase, ATP level) and thereby bring luminescence into closer correlation with the target activity or component level..

1. *Detecting products*

The methods, compositions and kits of the invention provide for the simple qualitative or quantitative detection of ATP (or ATP analogue which can function as a luciferase substrate) and enzyme activity, (e.g., kinase, protease, or cytochrome P-450 activity) in a sample and further in the presence of one or more test compounds. In preferred embodiments, a simple qualitative experiment in which luminescence is generated in a sample using the invention, a tolerance

enhancing agent will minimize the effect of an interfering compound and bring the luminescence into closer correlation with the biological or biochemical process being examined. Luminescence is generated using a reagent composition comprising luciferase such as LucPpe2m78, LucPpe2m90, LucPpe2m133 or LucPpe2m146, and possibly one or more ATPase inhibitors. In addition, the reagent composition may further comprise one or more of the following components: luciferin, which may be reconstituted from a lyophilized preparation, (alternatively, an appropriate luciferin-analogue substrate), ATPase inhibitor(s), inhibitor(s) of ATP generating enzymes such as kinases for end-point determinations, divalent cation (e.g. magnesium), enzyme stabilizing agent, and buffer.

10 A sample may be anything that is suspected of containing a bioactivity, e.g., kinase, protease or P-450 enzyme activity, that may be susceptible to one or more compounds in a high throughput screening procedure. Samples include solutions including one or more enzymes, cell lysates, beverages, swabs wiped on surfaces such as those of animals, plants, or inanimate objects, and the like. Other examples of samples include compositions of a known ATP concentration or
15 lysates of cells from any organism, prokaryotic or eukaryotic. Examples of prokaryotic cells include *E. coli*, *P. aeruginosa*, *B. subtilis*, and *S. typhimurium*. Eukaryotic cells may be from plants, animals, fungi, insects, etc., or cultured cells from such organisms. Examples include *A. thaliana* and *Brassica sp.*, *Chlamydomonas sp.* and *Volvox sp.* (plants), *H. sapiens* and *Mus sp.* (animals), *Saccharomyces sp.* (esp. *cerevisiae* and *pombe*) and *Neurospora sp.* (fungi), *D. melanogaster* and *C. elegans* (insects), *in vitro* cultured callus cells from any plant, primary cells cultured *in vitro* from any organism (such as organ explants from, for example, rodents), mammalian cell lines such as Madin-Darby canine kidney (MDCK) and Chinese hamster ovary (CHO) cells, and insect cell lines such as sf9 cells. These examples are furnished only as
20 examples and are not meant to be limiting.

25 A cell lysate comprises cellular components that are no longer organized into a recognizable intact cellular architecture. Cell lysates may have soluble and insoluble components, either of which may be removed before using the lysate. Lysates may be prepared by any means, including physical disruption using sonication, a dounce, mortar and pestle, freeze-thaw cycling, or any other device or process that destroys the physical integrity of cells; or lysis by detergents
30 such as zwitterionic and nonionic detergents, or cationic detergents, e.g., DTAB or CTAB. Preferably, the cell lysate is produced in such a way that the integrity of the ATP concentration is preserved at the time the cells are harvested. To accurately detect ATP in a sample, enzymes that would degrade cellular ATP or those that would generate ATP are preferably inhibited. In the absence of such inhibitors, there is a high risk of an inaccurate determination of ATP
35 concentration. Inhibitors such as DTAB inactivate ATPases, while other molecules such as NaF

inactivate ATP-generating enzyme activity. It is hypothesized, yet not fully understood, that for those cell types in which NaF is effective (*e.g.* lymphoid cells), NaF is potentially acting to inhibit (a) kinase(s).

5 Solutions with one or more enzymes include, without limitation, purified enzymes, unpurified enzymes, semi-purified enzymes, solubilized enzymes, partially solubilized enzymes, or membrane-bound enzymes.

Inhibitors of ATP-generating enzymes, those enzymes that have as a product or by-product ATP, such as the activity of kinases, may be incorporated into the reagent composition or kept in a separate container for subsequent incorporation into the reagent composition use in cases where end-point determination of kinase activity is desired. An example of an effective inhibitor is NaF (Bostick, et al., 1982). Such compositions comprise NaF at concentrations of at least 0.5mM, preferably at least 1 mM, more preferably at least 2, 3, 4, 5, 6, 7, 8, 9, 10, 11, 12, 13, 14, 15, 16, 17, 18, 19, 20, 25, 30, 35, 40, 45, 50, 55, 60, 65, 70, 75, 80, 85, 90, 95, 100 mM or any increment therein, 2 mM is most preferred. Other inhibitors of ATP-generating enzymes include 15 other kinase inhibitors, such as vanadate, AMP, DAPP (Bostick, et al., 1982) and dichloroacetic acid (Kiechle et al., 1980).

2. *Detecting and quantifying kinase activity*

The compositions, methods and kits of the invention permit a user to detect and quantify kinase activity by detecting and quantifying the amount of ATP consumed by the kinase in a sample by quantifying the amount of luminescence. The invention is applied to a sample of interest, and also to samples containing known amounts of ATP (controls). The signal generated from applying the invention to a sample of unknown ATP concentration is correlated to signals generated either by internal controls (the addition of a known amount of ATP to a sample and measuring the subsequent luminescence) or external standard curves, generated by measuring the luminescence of several samples of known ATP concentrations and plotting them graphically. Such methods are known to skilled artisans. (Moyer and Henderson, 1983; Ronner et al., 1999; Stanley, 1989; Wood et al., 1989).

3. *Effects of compounds*

The compositions, methods and kits of the present invention can be applied to measure the effects of compounds, such as inorganics, small molecules, peptides, proteins, polypeptides, carbohydrates, lipids, steroids, pollutants, carcinogens, or drugs on a biospecific event when contacted with a sample (*Aiginger et al.*, 1980; *Andreotti et al.*, 1995; *Bradbury et al.*, 2000; Cree and Andreotti, 1997; Crouch et al., 1993; Kangas et al., 1984). These compounds may be catalogued in compound libraries, or tested singly. Such applications of the invention apply 35 controls in which samples are contacted with control compounds whose effects on ATP

metabolism or enzyme function are known. Also preferably, controls include samples in which luciferase and the compound are present together to assure that the compound itself is not directly affecting luciferase activity.

The following examples are intended to illustrate the present invention without limitation.

5

EXAMPLES

Example 1: Tolerance enhancing effect of detergents on the inhibition of luciferase.

10 In this Example, an assay that employs a luciferase reporter was used to evaluate whether known P-450 enzyme inhibitors are also inhibitors of luciferase and whether tolerance enhancing effects of several detergents can be used to shield the luciferase against such potential inhibitors of luciferase. There is some concern that compounds under study for cellular modulation or enzyme modulation would also affect the luciferase reaction in a luciferase based cell or enzyme
15 reporter assay system. If this were true, then one would expect to obtain an increased number of false "hits" for an assay screen for inhibitors, for instance. Two potential luciferase inhibitors, Emodin and tyrphostin AG494, were identified from the "Library of Pharmaceutically Active Compounds" (LOPAC) screen. These two compounds are potential inhibitors of certain cytochrome P450 enzymes. The objective of the current experiment was to determine if Emodin and Tyrphostin AG494 are also inhibitors of the luciferase reaction, and further to determine
20 whether the presence of detergents could alleviate any inhibition on luciferase caused by these compounds. Luciferase activity was assayed in the presence of luciferin, with or without the compounds, and in the absence or presence of five different detergents at two different concentrations.

25 First, three luciferin-inhibitor 2X mixes were prepared. Each contains 100 mM KPO_4 , 20 nM luciferin, 0.1 mg/ml Sf9 control cell microsomal membranes (Available from BD Gentest, Bedford, MA); these membranes were used to mimic assay conditions of particular interest, a P450 assay, without the presence of the P-450 enzyme as P450s are commonly expressed recombinantly in sf9 cell microsomal membranes), \pm 10 μ M Emodin or 10 μ M Tyrphostin
30 AG494. The control mix containing no inhibitor was also prepared.

Second, eleven 2X luciferin detection reagents were reconstituted from a lyophilized cake containing UltraGlo® luciferase (100 micrograms/ml, available from Promega Corp.), ATP (400 micromolar), and excipient (0.4% Prionex® (Pentapharm, Basel, Switzerland)) using a buffer (200mM tricine, pH 8.4, 20mM $MgSO_4$). The final 2X reaction mixtures contained one of the
35 following:

- 1/ No detergent
- 2/ 0.2% TOMAH
- 3/ 2% TOMAH
- 4/ 0.2% Tergitol NP9
- 5 5/ 2% Tergitol NP9
- 6/ 0.2% Thesit
- 7/ 2% Thesit
- 8/ 0.2% CHAPS
- 9/ 2% CHAPS
- 10 10/ 0.2% Triton X-100
- 11/ 2% Triton X-100

The final concentration will be either 0%, 0.1% or 1% detergent. Finally, 50 microliters of each luciferin-inhibitor mix was combined with 50 microliters of each luciferin detection reagent in triplicate on white luminometer 96-well plates, mixed, and read on a BMG Fluostar luminometer (BMG). The results are expressed in both RLU and % control and are illustrated in Figure 1.

Figure 1 illustrates the relief of inhibition on luciferase by detergents in a standard luciferase-based reaction in the presence of luciferase inhibitors tryphostin or emodin. Part (a) compares RLU of control (no detergent) against reaction mixtures that contain 0.1 or 1% of Tomah, Tergitol (NP9), Thesit, CHAPS, or Triton X-100 as a function of rlu values. Part (b) is an analysis that compares the relative % of control against reaction mixtures that contain 0.1 or 1% of Tomah, Tergitol, Thesit, CHAPS, or Triton X-100.

Example 2: Minimization of false hit occurrence using tolerance enhancement agents

In this Example, screening of a commercially available library, LOPAC™ library (Library of Pharmaceutically Active Compounds, available from Sigma Corp., St. Louis, MO, USA) was performed to determine the effect of tolerance enhancing agents in protecting the luciferase reaction in a cell based or cell-free luciferase-based assay against potential inhibition by the drug compounds. The LOPAC library contains 640 compounds whose pharmaceutical activities are known. This library is commonly used to validate screening protocols that are under development.

From a LOPAC screen of 640 compounds, 189 compounds were identified as inhibiting luminescence from all of three cytochrome P450 isoforms (CYP1A2, CYP1A1, CYP2C9) by $\geq 10\%$ of an untreated control. It was reasoned that these might be luciferase inhibitors. If any one of the three CYP450 reactions were not apparently inhibited, then inhibition of the luciferase detection system could be ruled out. For the 189 compounds, there were three possible interpretations of the result. One, the compounds are true inhibitors of the P450s; two, the compounds are inhibiting the luciferase, meaning they are false hits; three, the compounds are inhibiting CYP450 and luciferase. To distinguish between these possibilities, the compounds were

screened in the presence of luciferin, without any P450 enzyme. If a compound continues to score as a hit, then it is inhibiting luciferase.

First, in duplicate wells on 96-well white luminometer plates, 2X luciferin-compound mixtures were prepared in 50 microliter, containing 10 uM of each compound, 40 nM luciferin, and 100 mM KPO₄ as described in Example 1. Each plate also contained control wells in duplicate, where no compound was added (vehicle alone).

Second, 2X luciferin detection reagents were prepared for each reaction, in triplicate as described in Example 1. The 2X reagents further contain of the following:

- 1/ No detergent
- 2/ 0.2% Tergitol NP9
- 3/ 2% Tergitol NP9

The final detergent concentration will be 0.1% or 1% detergent.

Finally, 50 microliters of each luciferin-inhibitor mix is combined with 50 microliters of each luciferin detection reagent in duplicate on white luminometer 96-well plates, mixed, let sit at room temperature for 15 minutes, and then read on a BMG Fluostar luminometer.

A compound would be considered a "hit" if it is more or less than average ± 3 X standard deviation (SD) of the control (99% confidence interval). On the accompanying graphs (Figures 2(a) to 2(d)) each diamond represents one compound, the middle line represents the average of the control (containing no inhibitor), and the two lines outside the middle line represent average ± 3 xSD of the control.

In the absence of any detergent, five compounds were identified as inhibitors of luciferase. Thus in a screen that also contains an enzyme of interest (such as cytochrome P450), these agent would be identified as "false" hits. However in the presence of 0.1% Tergitol, there are only four false hits. Finally, in the presence of 1% Tergitol, only one hit remains, while the other four either no longer inhibit or barely inhibit luciferase.

The results shown in Figures 2(A)-(D) demonstrate that it is advantageous to screen drug libraries in the presence of a tolerance enhancing agent such as a detergent because it helps minimize the number of false hits.

Example 3: Tolerance enhancing effect of detergents and non-detergents on the inhibition of firefly and Renilla luciferases

In this experiment, several tolerance enhancing agents were evaluated for their ability to protect luciferases from a known luciferase inhibitor, isoliquirtigenin (ILT) (100µM, Sigma

Chemical). ILT was added to luciferase reactions and the potential tolerance enhancing agents were evaluated for their ability to protect the luciferase from inhibition.

5 The basic firefly luciferase reactions contained 20 mM HEPES (Sigma Chemical) at pH 8.0, 6.4 mM Magnesium Sulfate (Fisher Scientific), 20 mM Dithiothreitol (City Chemical), 0.63 mM Coenzyme A (Pharmacia Biochemical), 0.4 mM EDTA (Sigma Chemical), 4.0 μ M Luciferin (Promega Biosciences), 0.56 mM ATP (Pharmacia Biochemical), and 1.3×10^{-6} mg/ml firefly luciferase (QuantiLum®, Promega Corporation).

10 The basic Renilla luciferase reactions contained 100 mM Potassium Phosphate buffer (Sigma Chemical) at pH 7.4, 500 mM Sodium Chloride (Fisher Scientific), 1.0 mM EDTA (Sigma Chemical), 200 nM Coelenterazine (Promega Biosciences), 0.1% Gelatin (Sigma Chemical) and 0.12 nmol/ml Renilla luciferase (ChemiCon Chemicals).

ILT was solubilized at 100 mM in dimethyl sulfoxide (Sigma Chemical). ILT was diluted 1:1000 and the protectors were diluted into the reaction mix before the reaction was initiated by the addition of luciferase.

15 Reaction volume for each sample was 100 μ l. Luminescence was integrated for 0.5 seconds per sample in a Turner Biosystems Veritas luminometer immediately after luciferase was added to the reactions and the reactions were mixed. All measurements were done in triplicate.

The relative protection provided by each compound is calculated as difference between the luminescence generated in the presence and the absence of the protector divided by the total amount of inhibition as represented by the following equation:

$$(L1 - L2)/(L3-L4)$$

25 wherein L1 represents luminescence with inhibitor and tolerance enhancing agent; L2 represents luminescence with inhibitor and no tolerance enhancing agent; L3 represents luminescence with no inhibitor and no tolerance enhancing agent; and L4 represents luminescence with inhibitor and no tolerance enhancing agent.

The relative protection in the presence of no tolerance enhancing agent, therefore, is 0% and in the absence of an inhibitor is 100%. The reactions used to generate luminescence in the absence of either inhibitor or tolerance enhancing agent still contained the solvent utilized to solubilize the inhibitor with which the reaction was to be compared.

30

Firefly luciferase

<u>Protector</u>	Source	Reaction Concentration	Relative Protection Against ILT
α -Cyclodextrin (Cyclohexaamylose)	Sigma Chemical	7 Mm	61%
Sucrose	Sigma Chemical	0.5% (w:v)	32%
Polyvinyl pyrrolidone	Sigma Chemical	0.1% w:v	69%
CHAPS	Sigma Chemical	0.02%	18%
CHAPS	Sigma Chemical	0.10%	57%
Deoxycholate	Sigma Chemical	0.02%	81%
Tergitol NP-9	Sigma Chemical	0.02%	88%
CTAB	Sigma Chemical	0.02%	100%

Renilla luciferase

<u>Protector</u>	Source	Reaction Concentration	Relative Protection Against ILT
α -Cyclodextrin (Cyclohexaamylose)	Sigma Chemical	1.4 mM	60%
Sucrose	Sigma Chemical	0.10% (w:v)	24%
Polyvinyl pyrrolidone	Sigma Chemical	0.10% w:v	74%
CHAPS	Sigma Chemical	0.10%	14%
CHAPS	Sigma Chemical	0.50%	97%
Deoxycholate	Sigma Chemical	0.10%	72%
Tergitol NP-9	Sigma Chemical	0.10%	97%
CTAB	Sigma Chemical	0.10%	95%

As seen in the data above, compounds that convey protection to the luciferase from the inhibitors can be easily determined. Also, the tolerance enhancing agents are not equally effective and the concentration of the tolerance enhancing agent affects the level of protection achieved.

While the present invention has now been described and exemplified with some specificity, those skilled in the art will appreciate the various modifications, including variations, additions and omissions, that may be made in what has been disclosed herein without departing from the spirit of the invention. Accordingly, it is intended that these modifications also be
5 encompassed by the present invention and that the scope of the present invention be limited solely by the broadest interpretation that lawfully can be accorded the appended claims.

WHAT WE CLAIM:

1. A method for enhancing the tolerance of an assay reagent to compounds in an assay sample not containing living cells, said assay reagent comprising a luciferase enzyme, and said method comprising contacting said luciferase enzyme with a tolerance enhancement agent in an amount sufficient to substantially protect luciferase enzymatic activity from interference of the compound.
2. The method according to claim 1 wherein the tolerance enhancement agent comprises a detergent or a non-detergent.
3. The method according to claim 2 where the tolerance enhancement agent comprises a cationic, anionic, non-ionic, or zwitterionic detergent.
4. The method according to claim 2 wherein the detergent comprises Tergitol®, Brij 35®, Brij 58®, Triton X-100®, Triton X-305®, Triton N101®, Chaps®, Chapso®, Bigchap®, Thesit®, Pluronic L64®, Rhodasurf 870®, Chema LA-9®, Sulfonyl 465®, deoxycholate, CTAB, Pierce C08®, or Pierce C10® detergent.
5. The method according to claim 4 wherein the detergent is Tergitol® NP-9.
6. The method according to claim 2 wherein the non-detergent comprises polyethylene glycol, polyvinyl pyridine, crown ether, and cyclodextrin.
7. A method of determining the effect of a compound on a non-luminogenic enzyme activity in an assay sample not containing living cells, comprising:
 - (a) providing a compound and a luminogenic molecule, wherein the luminogenic molecule is a substrate of the non-luminogenic enzyme and a pro-substrate of a luciferase enzyme;
 - (b) contacting the compound and the non-luminogenic enzyme so as to produce a first reaction mixture;
 - (c) contacting the first reaction mixture with a reagent composition comprising luciferase, the luminogenic molecule, and a tolerance enhancement agent so as to produce a second reaction mixture, wherein said tolerance enhancement agent being present in an amount effective to substantially protect the activity of the luciferase from interference from the

compound;

- (d) detecting luminescence in the second reaction mixture; and
- (e) determining the effect of the compound, if any, on the non-luminescent enzyme activity by comparing the detected luminescence to the luminescence of a similar reaction mixture not containing the compound, or containing the compound at a different concentration.

8. A method of determining the effect of a compound on a non-luminogenic enzyme activity in an assay sample not containing living cells, comprising:

- (a) providing a compound and a luminogenic molecule, wherein the luminogenic molecule is a substrate of the non-luminogenic enzyme and a pro-substrate of a luciferase enzyme;
- (b) contacting the compound, and the non-luminogenic enzyme so as to produce a first reaction mixture;
- (c) contacting the first reaction mixture with the luminogenic molecule so as to produce a second reaction mixture;
- (d) contacting the second reaction mixture with a reagent composition comprising luciferase and a tolerance enhancement agent so as to produce a third reaction mixture, wherein said tolerance enhancement agent being present in an amount effective to substantially protect the activity of the luciferase from interference from the compound;
- (e) detecting luminescence in the third reaction mixture; and
- (f) determining the effect of the compound, if any, on the non-luminescent enzyme activity by comparing the detected luminescence to the luminescence of a similar reaction mixture not containing the compound, or containing the compound at a different concentration.

9. A method of determining the effect of a compound on a non-luminogenic enzyme activity in an assay sample not containing living cells, comprising:

- (a) providing a luminogenic molecule and a compound for testing, the luminogenic molecule is a substrate for the non-luminogenic enzyme and a pro-substrate for luciferase;
- (b) contacting the compound, the luminogenic molecule and a non-luminogenic enzyme so as to produce a first reaction mixture;
- (c) contacting the first reaction mixture with a reagent composition comprising luciferase, and a tolerance enhancement agent so as to produce a second reaction mixture, wherein said tolerance enhancement agent being present in an amount effective to at least substantially protect the activity of the luciferase from interference from the compound;

- (d) detecting luminescence in the second reaction mixture; and
- (e) determining the effect of the compound, if any, on the non-luminescent enzyme activity by comparing the detected luminescence to the luminescence of a similar reaction mixture not containing the compound, or containing the compound at a different concentration.

5

10. A method of determining the effect of a compound on a non-luminogenic enzyme activity in an assay sample not containing living cells, comprising:

- (a) providing a compound for testing, a substrate for the non-luminogenic enzyme, a non-luminogenic enzyme, and ATP or ADP;

10

- (b) contacting the compound, the substrate, ATP or ADP, and a non-luminogenic enzyme so as to produce a first reaction mixture;

- (c) contacting the first reaction mixture with a reagent composition comprising luciferase, luciferin, and a tolerance enhancement agent so as to produce a second reaction mixture, wherein said tolerance enhancement agent being present in an amount effective to substantially protect the activity of the luciferase from interference from the compound;

15

- (d) detecting luminescence in the second reaction mixture; and
- (e) determining the effect of the compound, if any, on the non-luminescent enzyme activity by comparing the detected luminescence to the luminescence of a similar reaction mixture not containing the compound, or containing the compound at a different concentration.

20

11. A method of determining the effect of a compound on ATP generating enzyme activity in a sample not containing living cells, comprising:

- (a) providing a ADP and a compound for testing;

25

- (b) contacting the compound, ADP and a sample so as to produce a first reaction mixture;

- (c) contacting the first reaction mixture with a reagent composition comprising luciferase, luciferin, and a tolerance enhancing agent so as to produce a second reaction mixture, wherein said tolerance enhancement agent being present in an amount effective to substantially protect the activity of the luciferase from interference from the compound;

30

- (d) detecting luminescence in the second reaction mixture; and
- (e) determining the effect of the compound, if any, on the non-luminescent enzyme activity by comparing the detected luminescence to the luminescence of a similar reaction mixture not containing the compound, or containing the compound at a different concentration.

35

12. The method according to any one of claims 7 to 11 wherein the steps are

conducted consecutively.

13. The method according to any one of claims 7 to 11 wherein steps (b) and (c) are conducted simultaneously.

5

14. The method according to claim 8 wherein steps (b), (c), and (d) are conducted simultaneously.

15. The method according to claim 8 wherein steps (c) and (d) are conducted simultaneously.

10

16. The method according to any one of claims 7 to 11 wherein the tolerance enhancement agent comprises a detergent or a non-detergent.

17. The method according to claim 16 where the tolerance enhancement agent comprises a cationic, anionic, non-ionic, or zwitterionic detergent.

15

18. The method according to claim 17 wherein the detergent comprises Tergitol®, Brij 35®, Brij 58®, Triton X-100®, Triton X-305®, Triton N101®, Chaps®, Chapso®, Bigchap®, Thesit®, Pluronic L64®, Rhodasurf 870®, Chemal LA-9®, Sulfonyl 465®, deoxycholate, CTAB, Pierce C08®, or Pierce C10® detergent.

20

19. The method according to claim 16 wherein the non-detergent comprises, polyethylene glycol, polyvinyl pyridine, crown ether, and cyclodextrin.

25

20. The method of any one of claims 7 to 11 wherein the non-luminogenic enzyme is a protease.

21. The method according to claim 20 wherein the protease is trypsin, trypsinase, or caspase.

30

22. The method according to claim 21 wherein caspase comprises caspase-3, caspase 7, caspase 8, or caspase-9.

35

23. The method according to claim 20 wherein the luminogenic substrate comprises

an aminoluciferin amino modified with an amino acid or peptide or a carboxyl protected derivative thereof.

24. The method according to any one of claims 8 or 9 wherein the non-luminogenic
5 enzyme is a cytochrome P-450 enzyme.

25. The method according to claim 24 wherein the luminogenic substrate is a D-luciferin derivative.

10 26. The method according to claim 24 wherein the tolerance enhancement agent is Tergitol® detergent.

27. The method according to claim 26 wherein the Tergitol® detergent is Tergitol NP-9® detergent.

15

28. The method according to claim 10 wherein the non-luminogenic enzyme is a kinase.

29. The method according to claim 28 wherein the detergent is Tergitol®, Thesit®,
20 or Chaps® detergent.

30. The method according to claim 10 wherein the compound and enzyme are contacted for a first predetermined time period prior to contact with the substrate and ATP or ADP.

25

31. The method according to claim 30 wherein the substrate and ATP or ADP are added sequentially or simultaneously.

32. The method according to claim 11 wherein the ATP generating enzyme is a
30 kinase or phosphatase.

33. The method according to claim 32 wherein the tolerance enhancement agent comprises Tergitol®, Thesit®, or Chaps® detergent.

35 34. A method of determining the effect of a compound on a kinase enzyme activity in

an assay sample not containing living cells, comprising:

(a) providing a compound for testing, a kinase substrate, a kinase enzyme, and ATP or ADP;

5 (b) contacting the compound, the substrate, ATP or ADP, and kinase enzyme so as to produce a first reaction mixture;

(c) contacting the first reaction mixture with a reagent composition comprising luciferase, luciferin, and a tolerance enhancement agent so as to produce a second reaction mixture, wherein said tolerance enhancement agent being present in an amount effective to substantially protect the activity of the luciferase from interference from the compound;

10 (d) detecting luminescence in the second reaction mixture; and

(e) determining the effect of the compound, if any, on kinase enzyme activity by comparing the detected luminescence to the luminescence of a similar reaction mixture not containing the compound, or containing the compound at a different concentration.

15 35. The method according to claim 34 wherein the kinase enzyme is a protein kinase.

36. The method according to claim 35 wherein the tolerance enhancement agent comprises a Tergitol®, Thesit®, or Chaps® detergent.

20 37. The method according to claim 34 wherein the compound and kinase enzyme are contacted for a first predetermined time period prior to contact with the substrate and ATP or ADP.

25 38. The method according to claim 34 wherein the substrate and ATP or ADP are added sequentially or simultaneously.

39. The method according to claim 34 wherein the steps are carried out sequentially.

30 40. The method according to claim 34 wherein step(b) and step(c) are carried out simultaneously.

41. A kit comprising:

(a) a tolerance enhancement agent for substantially protecting luciferase activity from interference from a test compound;

35 (b) a luciferase enzyme;

- (c) optional buffer reagents; and
- (d) optional directions for using the kit.

5 42. The kit according to claim 41 further comprising ATP.

43. The kit according to claim 41 wherein the tolerance enhancement agent comprises a detergent or a non-detergent.

10 44. The kit according to claim 43 wherein the detergent comprises Tergitol®, Brij 35®, Brij 58®, Triton X-100®, Triton X-305®, Triton N101®, Chaps®, Chapso®, Bigchap®, Thesit®, Pluronic L64®, Rhodasurf 870®, Chemal LA-9®, Sulfonyl 465®, deoxycholate, CTAB, Pierce C08®, or Pierce C10® detergent.

15 45. The kit according to claim 43 wherein the non-detergent comprises polyethylene glycol, polyvinyl pyridine, crown ether, and cyclodextrin.

46. The kit according to claim 41, further comprising optional luciferase substrate or prosubstrate.

20

Fig. 1a

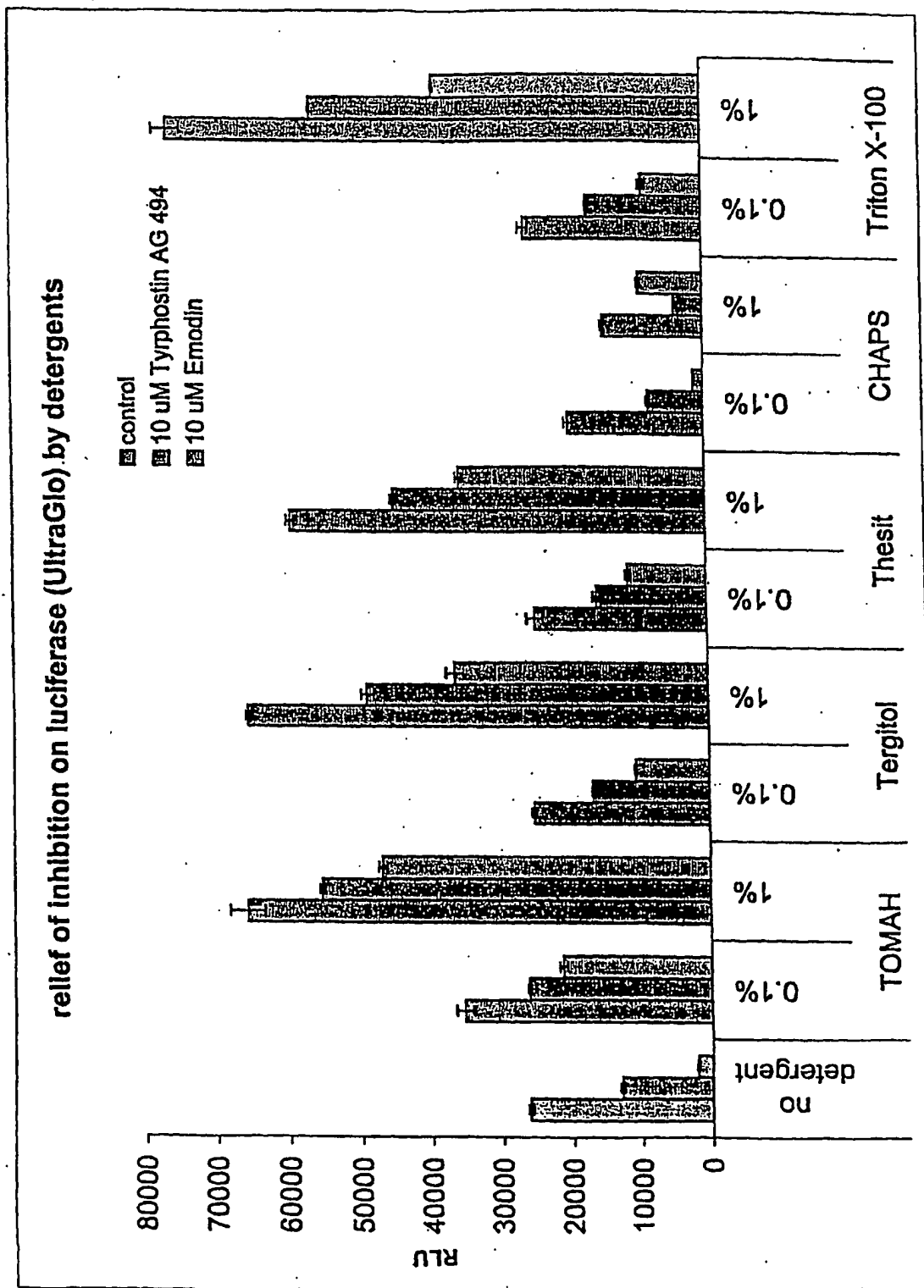


Fig. 1b

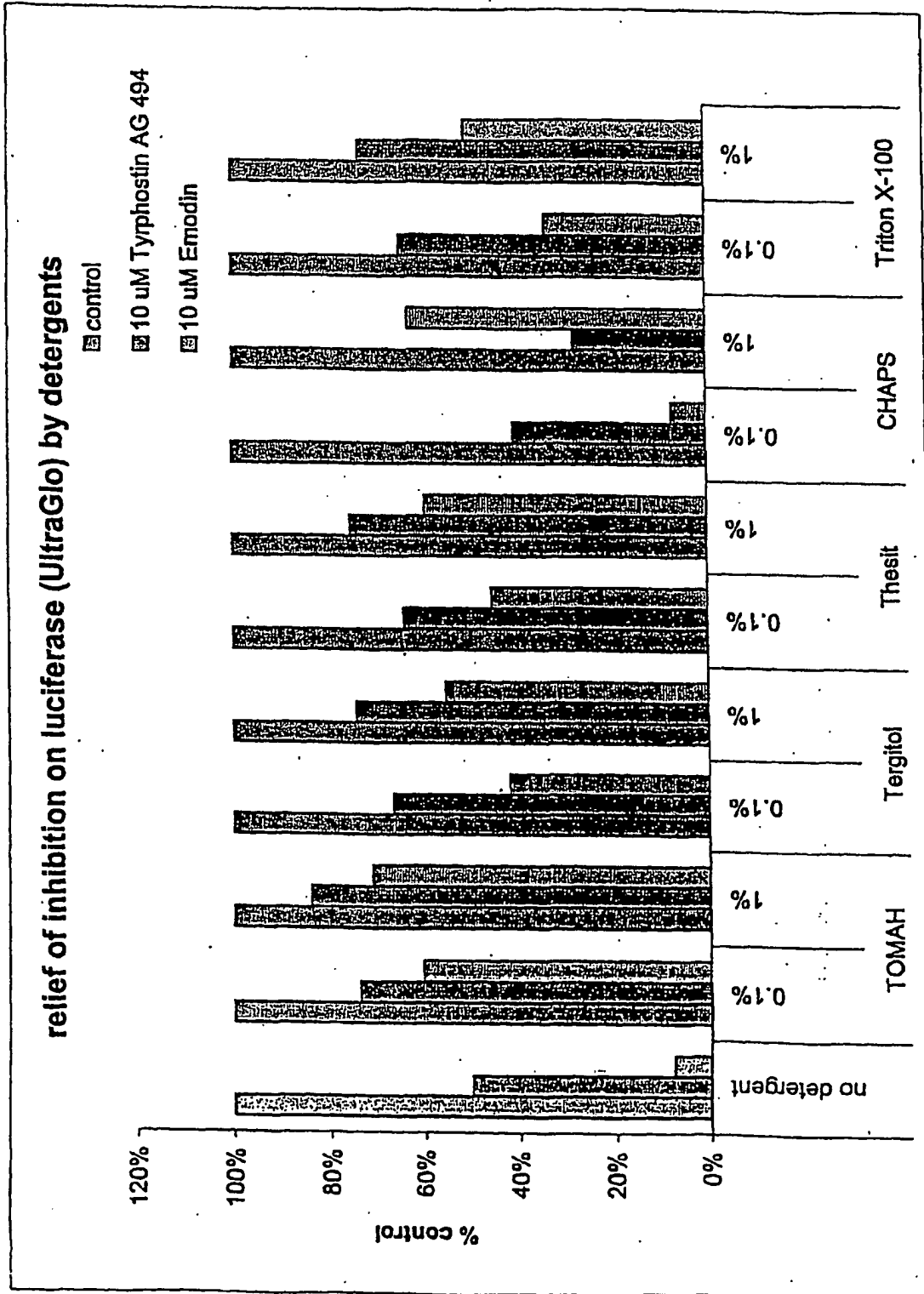


Fig. 2a

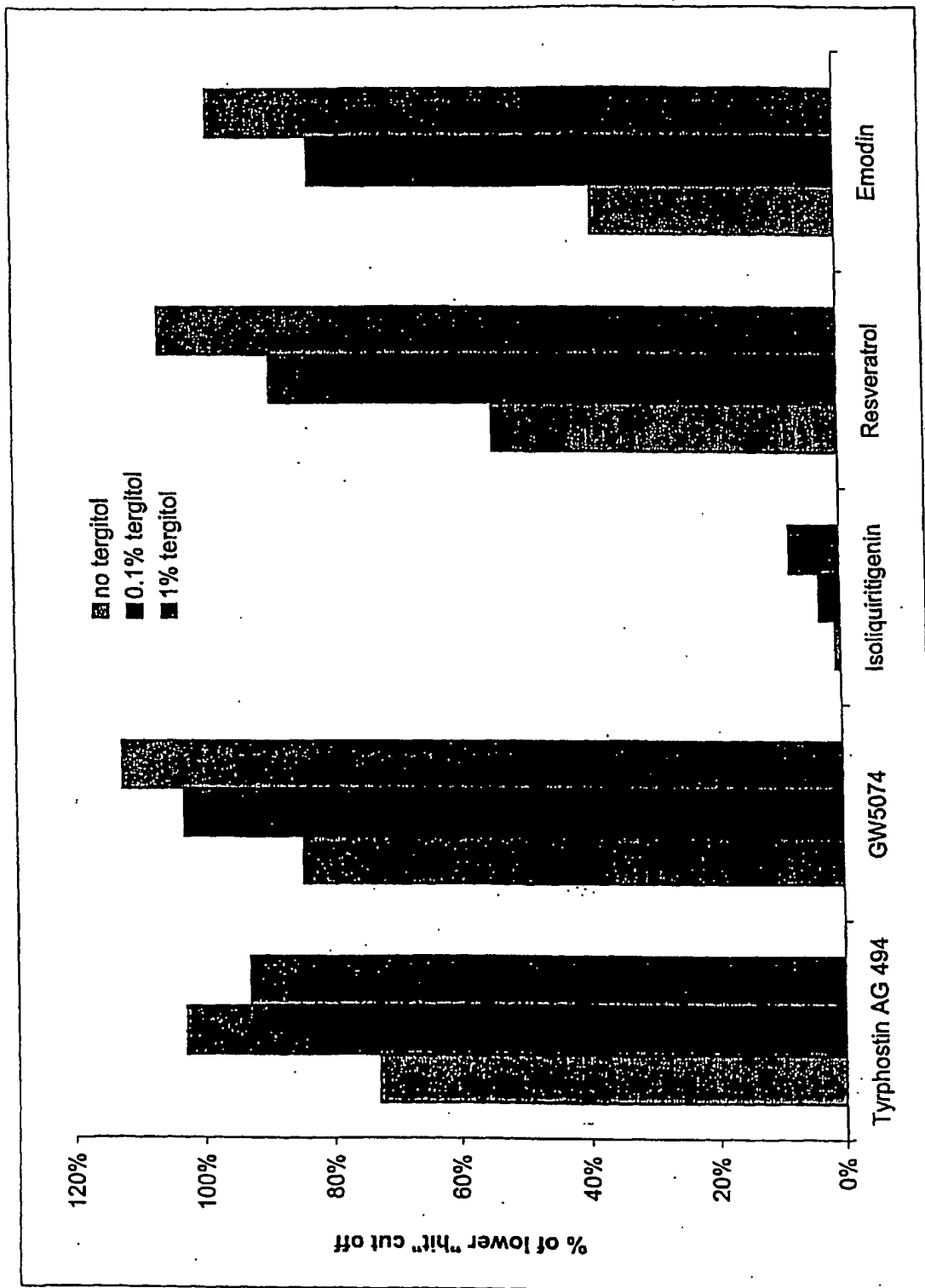


Fig. 2b

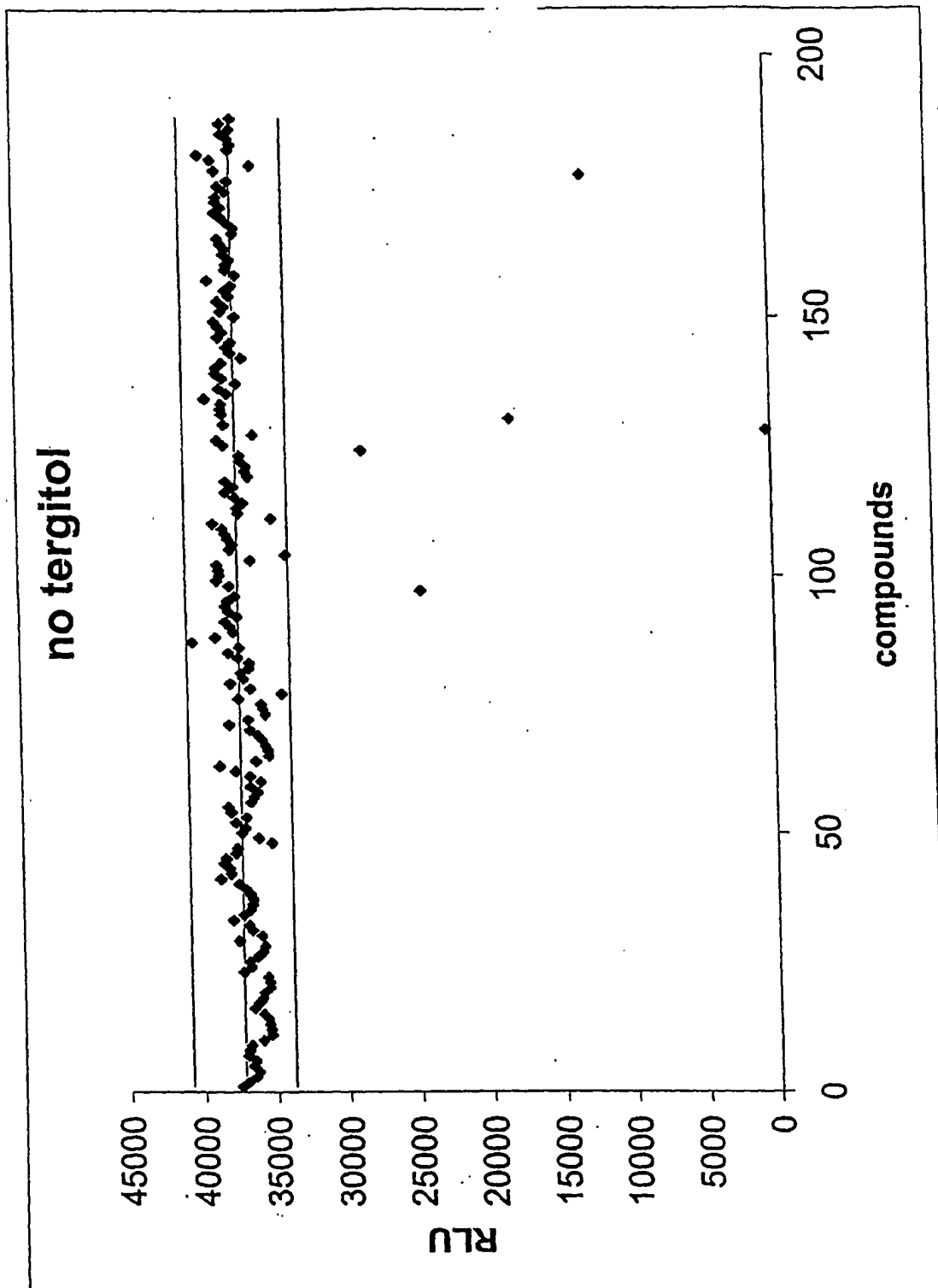


Fig. 2c

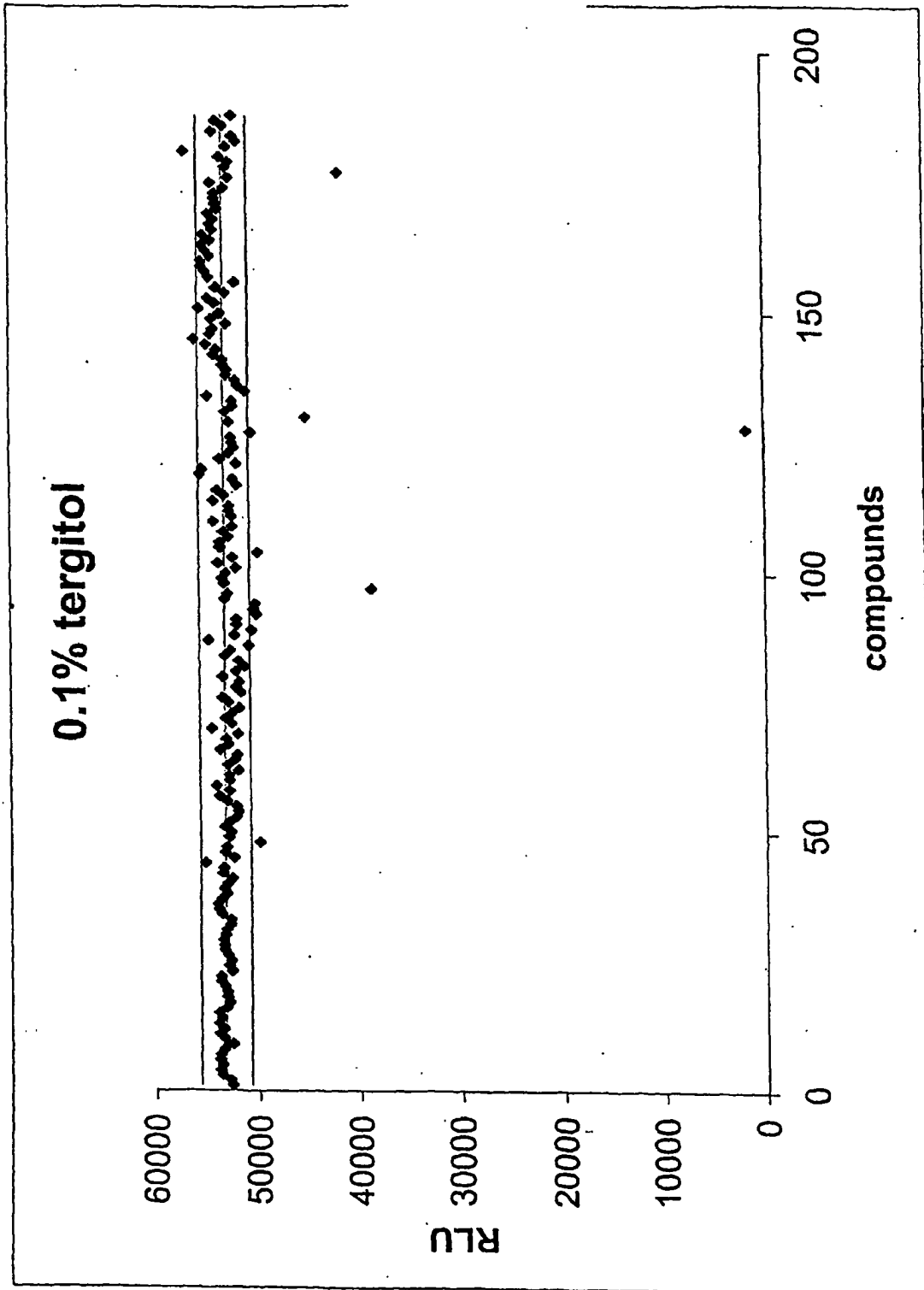
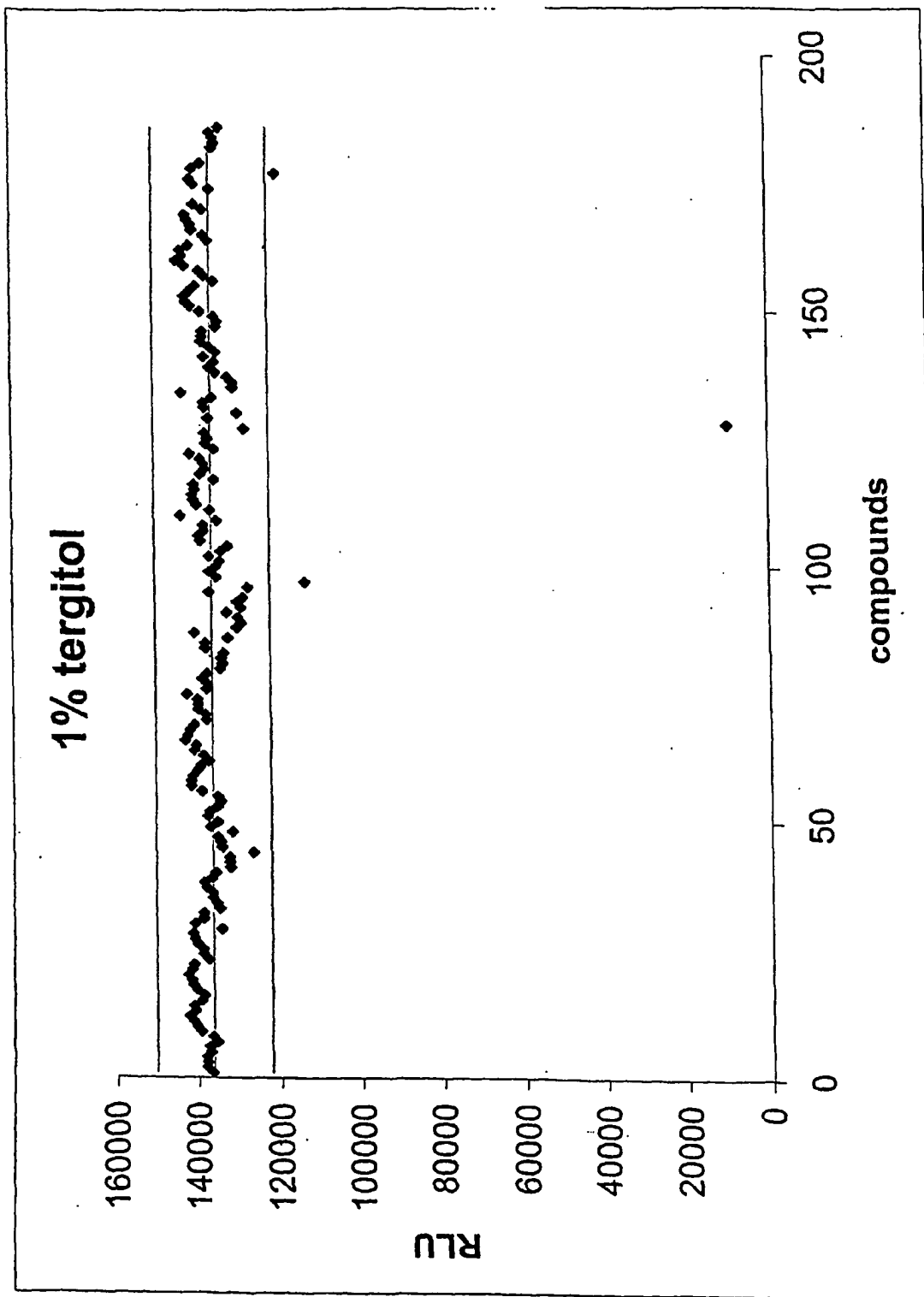


Fig. 2d



SEQUENCE LISTING

78-OB10 amino acid sequence (SEQ ID NO:1)

Met Ala Asp Lys Asn Ile Leu Tyr Gly Pro Glu Pro Phe Tyr Pro Leu
 5 1 5 10 15
 Ala Asp Gly Thr Ala Gly Glu Gln Met Phe Asp Ala Leu Ser Arg Tyr
 20 25 30
 Ala Asp Ile Ser Gly Cys Ile Ala Leu Thr Asn Ala His Thr Lys Glu
 35 40 45
 10 Asn Val Leu Tyr Glu Glu Phe Leu Lys Leu Ser Cys Arg Leu Ala Glu
 50 55 60
 Ser Phe Lys Lys Tyr Gly Leu Lys Gln Asn Asp Thr Ile Ala Val Cys
 65 70 75 80
 Ser Glu Asn Gly Leu Gln Phe Phe Leu Pro Val Ile Ala Ser Leu Tyr
 15 85 90 95
 Leu Gly Ile Ile Ala Ala Pro Val Ser Asp Lys Tyr Ile Glu Arg Glu
 100 105 110
 Leu Ile His Ser Leu Gly Ile Val Lys Pro Arg Ile Ile Phe Cys Ser
 115 120 125
 20 Lys Asn Thr Phe Gln Lys Val Leu Asn Val Lys Ser Lys Leu Lys Ser
 130 135 140
 Val Glu Thr Ile Ile Ile Leu Asp Leu Asn Glu Asp Leu Gly Gly Tyr
 145 150 155 160
 Gln Cys Leu Asn Asn Phe Ile Ser Gln Asn Ser Asp Ser Asn Leu Asp
 25 165 170 175
 Val Lys Lys Phe Lys Pro Tyr Ser Phe Asn Arg Asp Asp Gln Val Ala
 180 185 190
 Leu Val Met Phe Ser Ser Gly Thr Thr Gly Val Pro Lys Gly Val Met
 195 200 205
 30 Leu Thr His Lys Asn Ile Val Ala Arg Phe Ser Leu Ala Lys Asp Pro
 210 215 220
 Thr Phe Gly Asn Ala Ile Asn Pro Thr Thr Ala Ile Leu Thr Val Ile
 225 230 235 240
 Pro Phe His His Gly Phe Gly Met Met Thr Thr Leu Gly Tyr Phe Thr
 35 245 250 255
 Cys Gly Phe Arg Val Val Leu Met His Thr Phe Glu Glu Lys Leu Phe
 260 265 270
 Leu Gln Ser Leu Gln Asp Tyr Lys Val Glu Ser Thr Leu Leu Val Pro
 275 280 285
 40 Thr Leu Met Ala Phe Leu Ala Lys Ser Ala Leu Val Glu Lys Tyr Asp
 290 295 300
 Leu Ser His Leu Lys Glu Ile Ala Ser Gly Gly Ala Pro Leu Ser Lys
 305 310 315 320
 Glu Ile Gly Glu Met Val Lys Lys Arg Phe Lys Leu Asn Phe Val Arg
 45 325 330 335
 Gln Gly Tyr Gly Leu Thr Glu Thr Thr Ser Ala Val Leu Ile Thr Pro

340 345 350
 Lys Gly Asp Ala Arg Pro Gly Ser Thr Gly Lys Ile Val Pro Phe His
 355 360 365
 Ala Val Lys Val Val Asp Pro Thr Thr Gly Lys Ile Leu Gly Pro Asn
 5 370 375 380
 Glu Pro Gly Glu Leu Tyr Phe Lys Gly Ala Met Ile Met Lys Gly Tyr
 385 390 395 400
 Tyr Asn Asn Glu Glu Ala Thr Lys Ala Ile Ile Asp Asn Asp Gly Trp
 405 410 415
 10 Leu Arg Ser Gly Asp Ile Ala Tyr Tyr Asp Asn Asp Gly His Phe Tyr
 420 425 430
 Ile Val Asp Arg Leu Lys Ser Leu Ile Lys Tyr Lys Gly Tyr Gln Val
 435 440 445
 Ala Pro Ala Glu Ile Glu Gly Ile Leu Leu Gln His Pro Tyr Ile Val
 15 450 455 460
 Asp Ala Gly Val Thr Gly Ile Pro Asp Glu Ala Ala Gly Glu Leu Pro
 465 470 475 480
 Ala Ala Gly Val Val Val Gln Thr Gly Lys Tyr Leu Asn Glu Gln Ile
 485 490 495
 20 Val Gln Asp Phe Val Ser Ser Gln Val Ser Thr Ala Lys Trp Leu Arg
 500 505 510
 Gly Gly Val Lys Phe Leu Asp Glu Ile Pro Lys Gly Ser Thr Gly Lys
 515 520 525
 Ile Asp Arg Lys Val Leu Arg Gln Met Phe Glu Lys His Thr Asn Gly
 25 530 535 540

90-1B5 amino acid sequence (SEQ ID NO:2)

30 Met Ala Asp Lys Asn Ile Leu Tyr Gly Pro Glu Pro Phe Tyr Pro Leu
 1 5 10 15
 Glu Asp Gly Thr Ala Gly Glu Gln Met Phe Asp Ala Leu Ser Arg Tyr
 20 25 30
 Ala Asp Ile Pro Gly Cys Ile Ala Leu Thr Asn Ala His Thr Lys Glu
 35 35 40 45
 Asn Val Leu Tyr Glu Glu Phe Leu Lys Leu Ser Cys Arg Leu Ala Glu
 50 55 60
 Ser Phe Lys Lys Tyr Gly Leu Lys Gln Asn Asp Thr Ile Ala Val Cys
 65 70 75 80
 40 Ser Glu Asn Gly Leu Gln Phe Phe Leu Pro Val Ile Ala Ser Leu Tyr
 85 90 95
 Leu Gly Ile Ile Val Ala Pro Val Asn Asp Lys Tyr Ile Glu Arg Glu
 100 105 110
 Leu Ile His Ser Leu Gly Ile Val Lys Pro Arg Ile Val Phe Cys Ser
 45 115 120 125
 Lys Asn Thr Phe Gln Lys Val Leu Asn Val Lys Ser Lys Leu Lys Ser
 130 135 140
 Ile Glu Thr Ile Ile Ile Leu Asp Leu Asn Glu Asp Leu Gly Gly Tyr

145 150 155 160
 Gln Cys Leu Asn Asn Phe Ile Ser Gln Asn Ser Asp Ser Asn Leu Asp
 165 170 175
 Val Lys Lys Phe Lys Pro Tyr Ser Phe Asn Arg Asp Asp Gln Val Ala
 5 180 185 190
 Leu Ile Met Phe Ser Ser Gly Thr Thr Gly Leu Pro Lys Gly Val Met
 195 200 205
 Leu Thr His Lys Asn Ile Val Ala Arg Phe Ser Leu Ala Lys Asp Pro
 10 210 215 220
 Thr Phe Gly Asn Ala Ile Asn Pro Thr Thr Ala Ile Leu Thr Val Ile
 225 230 235 240
 Pro Phe His His Gly Phe Gly Met Met Thr Thr Leu Gly Tyr Phe Thr
 245 250 255
 Cys Gly Phe Arg Val Leu Met His Thr Phe Glu Glu Lys Leu Phe
 15 260 265 270
 Leu Gln Ser Leu Gln Asp Tyr Lys Val Glu Ser Thr Leu Leu Val Pro
 275 280 285
 Thr Leu Met Ala Phe Leu Ala Lys Ser Ala Leu Val Glu Lys Tyr Asp
 290 295 300
 20 305 310 315 320
 Leu Ser His Leu Lys Glu Ile Ala Ser Gly Gly Ala Pro Leu Ser Lys
 325 330 335
 Glu Ile Gly Glu Met Val Lys Lys Arg Phe Lys Leu Asn Phe Val Arg
 340 345 350
 25 355 360 365
 Gln Gly Tyr Gly Leu Thr Glu Thr Thr Ser Ala Val Leu Ile Thr Pro
 370 375 380
 Lys Gly Asp Ala Lys Pro Gly Ser Thr Gly Lys Ile Val Pro Phe His
 385 390 395 400
 30 405 410 415
 Ala Val Lys Val Val Asp Pro Thr Thr Gly Lys Ile Leu Gly Pro Asn
 420 425 430
 35 435 440 445
 Glu Pro Gly Glu Leu Tyr Phe Lys Gly Pro Met Ile Met Lys Gly Tyr
 450 455 460
 Tyr Asn Asn Glu Glu Ala Thr Lys Ala Ile Ile Asp Asn Asp Gly Trp
 465 470 475 480
 40 485 490 495
 Leu Arg Ser Gly Asp Ile Ala Tyr Tyr Asp Asn Asp Gly His Phe Tyr
 500 505 510
 45 515 520 525
 Ile Val Asp Arg Leu Lys Ser Leu Ile Lys Tyr Lys Gly Tyr Gln Val
 525 530 535
 Ala Pro Ala Glu Ile Glu Gly Ile Leu Leu Gln His Pro Tyr Ile Val
 540 545 550
 Asp Ala Gly Val Thr Gly Ile Pro Asp Glu Ala Ala Gly Glu Leu Pro
 555 560 565 570
 Ala Ala Gly Val Val Val Gln Thr Gly Lys Tyr Leu Asn Glu Gln Ile
 575 580 585 590
 Val Gln Asp Tyr Val Ala Ser Gln Val Ser Thr Ala Lys Trp Leu Arg
 595 600 605
 Gly Gly Val Lys Phe Leu Asp Glu Ile Pro Lys Gly Ser Thr Gly Lys
 610 615 620
 Ile Asp Arg Lys Val Leu Arg Gln Met Phe Glu Lys His Thr Asn Gly

530 535 540

133-1B2 amino acid sequence (SEQ ID NO:3)

5
 Met Ala Asp Lys Asn Ile Leu Tyr Gly Pro Glu Pro Phe Tyr Pro Leu
 1 5 10 15
 Glu Asp Gly Thr Ala Gly Glu Gln Met Phe Asp Ala Leu Ser Arg Tyr
 20 25 30
 10 Ala Asp Ile Pro Gly Cys Ile Ala Leu Thr Asn Ala His Thr Lys Glu
 35 40 45
 Asn Val Leu Tyr Glu Glu Phe Leu Lys Leu Ser Cys Arg Leu Ala Glu
 50 55 60
 Ser Phe Lys Lys Tyr Gly Leu Lys Gln Asn Asp Thr Ile Ala Val Cys
 15 65 70 75 80
 Ser Glu Asn Ser Leu Gln Phe Phe Leu Pro Val Ile Ala Ser Leu Tyr
 85 90 95
 Leu Gly Ile Ile Val Ala Pro Val Asn Asp Lys Tyr Ile Glu Arg Glu
 100 105 110
 20 Leu Ile His Ser Leu Gly Ile Val Lys Pro Arg Ile Val Phe Cys Ser
 115 120 125
 Lys Asn Thr Phe Gln Lys Val Leu Asn Val Lys Ser Lys Leu Lys Ser
 130 135 140
 Ile Glu Thr Ile Ile Ile Leu Asp Leu Asn Asp Asp Leu Gly Gly Tyr
 25 145 150 155 160
 Gln Cys Leu Asn Asn Phe Ile Ser Gln Asn Ser Asp Ser Asn Leu Asp
 165 170 175
 Val Lys Lys Phe Lys Pro Tyr Ser Phe Asn Arg Asp Asp Gln Val Ala
 180 185 190
 30 Leu Ile Met Phe Ser Ser Gly Thr Thr Gly Leu Pro Lys Gly Val Met
 195 200 205
 Leu Thr His Lys Asn Ile Val Ala Arg Phe Ser Ile Ala Lys Asp Pro
 210 215 220
 Thr Phe Gly Asn Ala Ile Asn Pro Thr Ser Ala Ile Leu Thr Val Ile
 35 225 230 235 240
 Pro Phe His His Gly Phe Gly Met Met Thr Thr Leu Gly Tyr Phe Thr
 245 250 255
 Cys Gly Phe Arg Val Val Leu Met His Thr Phe Glu Glu Lys Leu Phe
 260 265 270
 40 Leu Gln Ser Leu Gln Asp Tyr Lys Val Glu Ser Thr Leu Leu Val Pro
 275 280 285
 Thr Leu Met Ala Phe Leu Ala Lys Ser Ala Leu Val Glu Lys Tyr Asp
 290 295 300
 Leu Ser His Leu Lys Glu Ile Ala Ser Gly Gly Ala Pro Leu Ser Lys
 45 305 310 315 320
 Glu Ile Gly Glu Met Val Lys Lys Arg Phe Lys Leu Asn Phe Val Arg
 325 330 335
 Gln Gly Tyr Gly Leu Thr Glu Thr Thr Ser Ala Val Leu Ile Thr Pro

340 345 350
 Lys Gly Asp Ala Lys Pro Gly Ser Thr Gly Lys Ile Val Pro Phe His
 355 360 365
 Ala Val Lys Val Val Asp Pro Thr Thr Gly Lys Ile Leu Gly Pro Asn
 5 370 375 380
 Glu Pro Gly Glu Leu Tyr Phe Lys Gly Pro Met Ile Met Lys Gly Tyr
 385 390 395 400
 Tyr Asn Asn Glu Glu Ala Thr Lys Ala Ile Ile Asp Asn Asp Gly Trp
 405 410 415
 10 Leu Arg Ser Gly Asp Ile Ala Tyr Tyr Asp Asn Asp Gly His Phe Tyr
 420 425 430
 Ile Val Asp Arg Leu Lys Ser Leu Ile Lys Tyr Lys Gly Tyr Gln Val
 435 440 445
 Ala Pro Ala Glu Ile Glu Gly Ile Leu Leu Gln His Pro Tyr Ile Val
 15 450 455 460
 Asp Ala Gly Val Thr Gly Ile Pro Asp Glu Ala Ala Gly Glu Leu Pro
 465 470 475 480
 Ala Ala Gly Val Val Val Gln Thr Gly Lys Tyr Leu Asn Glu Gln Ile
 485 490 495
 20 Val Gln Asp Tyr Val Ala Ser Gln Val Ser Thr Ala Lys Trp Leu Arg
 500 505 510
 Gly Gly Val Ile Phe Leu Asp Glu Ile Pro Lys Gly Ser Thr Gly Lys
 515 520 525
 Ile Asp Arg Lys Val Leu Arg Gln Met Leu Glu Lys His Thr Asn Gly
 25 530 535 540

146-1H2 amino acid sequence (SEQ ID NO:4)

30 Met Ala Asp Lys Asn Ile Leu Tyr Gly Pro Glu Pro Phe Tyr Pro Leu
 1 5 10 15
 Glu Asp Gly Thr Ala Gly Glu Gln Met Phe Asp Ala Leu Ser Arg Tyr
 20 25 30
 Ala Ala Ile Pro Gly Cys Ile Ala Leu Thr Asn Ala His Thr Lys Glu
 35 35 40 45
 Asn Val Leu Tyr Glu Glu Phe Leu Lys Leu Ser Cys Arg Leu Ala Glu
 50 55 60
 Ser Phe Lys Lys Tyr Gly Leu Lys Gln Asn Asp Thr Ile Ala Val Cys
 65 70 75 80
 40 Ser Glu Asn Ser Leu Gln Phe Phe Leu Pro Val Ile Ala Ser Leu Tyr
 85 90 95
 Leu Gly Ile Ile Val Ala Pro Val Asn Asp Lys Tyr Ile Glu Arg Glu
 100 105 110
 Leu Ile His Ser Leu Gly Ile Val Lys Pro Arg Ile Val Phe Cys Ser
 45 115 120 125
 Lys Asn Thr Phe Gln Lys Val Leu Asn Val Lys Ser Lys Leu Lys Ser
 130 135 140
 Ile Glu Thr Ile Ile Ile Leu Asp Leu Asn Glu Asp Leu Gly Gly Tyr

145 150 155 160
 Gln Cys Leu Asn Asn Phe Ile Ser Gln Asn Ser Asp Ser Asn Leu Asp
 165 170 175
 Val Lys Lys Phe Lys Pro Tyr Ser Phe Asn Arg Asp Asp Gln Val Ala
 5 180 185 190
 Ser Ile Met Phe Ser Ser Gly Thr Thr Gly Leu Pro Lys Gly Val Met
 195 200 205
 Leu Thr His Lys Asn Ile Val Ala Arg Phe Ser Ile Ala Lys Asp Pro
 210 215 220
 10 Thr Phe Gly Asn Ala Ile Asn Pro Thr Ser Ala Ile Leu Thr Val Ile
 225 230 235 240
 Pro Phe His His Gly Phe Gly Met Met Thr Thr Leu Gly Tyr Phe Thr
 245 250 255
 Cys Gly Phe Arg Val Val Leu Met His Thr Phe Glu Glu Lys Leu Phe
 15 260 265 270
 Leu Gln Ser Leu Gln Asp Tyr Lys Val Glu Ser Thr Leu Leu Val Pro
 275 280 285
 Thr Leu Met Ala Phe Leu Ala Lys Ser Ala Leu Val Glu Lys Tyr Asp
 290 295 300
 20 Leu Ser His Leu Lys Glu Ile Ala Ser Gly Gly Ala Pro Leu Ser Lys
 305 310 315 320
 Glu Ile Gly Glu Met Val Lys Lys Arg Phe Lys Leu Asn Phe Val Arg
 325 330 335
 Gln Gly Tyr Gly Leu Thr Glu Thr Thr Ser Ala Val Leu Ile Thr Pro
 25 340 345 350
 Lys Gly Asp Ala Lys Pro Gly Ser Thr Gly Lys Ile Val Pro Leu His
 355 360 365
 Ala Val Lys Val Val Asp Pro Thr Thr Gly Lys Ile Leu Gly Pro Asn
 370 375 380
 30 Glu Pro Gly Glu Leu Tyr Phe Lys Gly Pro Met Ile Met Lys Gly Tyr
 385 390 395 400
 Tyr Asn Asn Glu Glu Ala Thr Lys Ala Ile Ile Asp Asn Asp Gly Trp
 405 410 415
 Leu Arg Ser Gly Asp Ile Ala Tyr Tyr Asp Asn Asp Gly His Phe Tyr
 35 420 425 430
 Ile Val Asp Arg Leu Lys Ser Leu Ile Lys Tyr Lys Gly Tyr Gln Val
 435 440 445
 Ala Pro Ala Glu Ile Glu Gly Ile Leu Leu Gln His Pro Tyr Ile Val
 450 455 460
 40 Asp Ala Gly Val Thr Gly Ile Pro Asp Glu Ala Ala Gly Glu Leu Pro
 465 470 475 480
 Ala Ala Gly Val Val Val Gln Thr Gly Lys Tyr Leu Asn Glu Gln Ile
 485 490 495
 Val Gln Asp Tyr Val Ala Ser Gln Val Ser Thr Ala Lys Trp Leu Arg
 45 500 505 510
 Gly Gly Val Lys Phe Leu Asp Glu Ile Pro Lys Gly Ser Thr Gly Lys
 515 520 525
 Ile Asp Arg Lys Val Leu Arg Gln Met Leu Glu Lys His Thr Asn Gly

530

535

540

78-0B10 (SEQ ID NO:5)

5 GGATCCAATGGCAGATAAGAATATTTTATATGGGCCC GAACCATTTTATCCCTTG
GCTGATGGGACGGCTGGAGAACAGATGTTTGACGCATTATCTCGTTATGCAGAT
ATTTCCGGATGCATAGCATTGACAAATGCTCATAAAAAGAAAATGTTTTATATG
AAGAGTTTTTAAAATTGTCGTGTCGTTTAGCGGAAAGTTTTTAAAAGTATGGATT
AAAACAAAACGACACAATAGCGGTGTGTAGCGAAAATGGTTTGCAATTTTCCCT
10 TCCTGTAATTGCATCATTGTATCTTGAATAAATTGCAGCACCTGTTAGTGATAAA
TACATTGAACGTGAATTAATACACAGTCTTGGTATTGTAAAACCACGCATAATTT
TTTGCTCCAAGAATACTTTTCAAAAAGTACTGAATGTAAAATCTAAATTAATAATC
TGTAGAAACTATTATTATATTAGACTTAAATGAAGACTTAGGAGGTTATCAATGC
CTCAACAACCTTTATTTCTCAAAATCCGATAGTAATCTGGACGTAAAAAAATTTA
15 AACCATATTCTTTTAATCGAGACGATCAGGTTGCGTTGGTAATGTTTTCTTCTGGT
ACAACCTGGTGTCCGAAGGGAGTCATGCTAACTACAAGAATATTGTTGCACGA
TTTTCTCTTGCAAAAGATCCTACTTTTGGTAAACGCAATTAATCCCACGACAGCAA
TTTTAACGGTAATACCTTTCCACCATGGTTTTGGTATGATGACCACATTAGGATA
CTTACTTGTGGATTCCGAGTTGTTCTAATGCACACGTTTGAAGAAAACTATTT
20 CTACAATCATTACAAGATTATAAAGTGGAAAGTACTTTACTTGTACCAACATTA
TGGCATTCTTGCAAAAAGTGCATTAGTTGAAAAGTACGATTTATCGCACTTAAA
AGAAATTGCATCTGGTGGCGCACCTTTATCAAAAAGAAATTGGGGAGATGGTGAA
AAAACGGTTTAAATTAACCTTTGTCAGGCAAGGGTATGGATTAACAGAAACCAC
TTCGGCTGTTTTAATTACACCGAAAGGTGACGCCAGACCGGGATCAACTGGTAA
AATAGTACCATTTACGCTGTTAAAGTTGTCGATCCTACAACAGGAAAAATTTTG
25 GGGCCAAATGAACCTGGAGAATTGTATTTTAAAGGCGCCATGATAATGAAGGGT
TATTATAATAATGAAGAAGCTACTAAAGCAATTATTGATAATGACGGATGGTTG
CGCTCTGGTGATATTGCTTATTATGACAATGATGGCCATTTTATATTGTGGACA
GGCTGAAGTCATTAATTAATATAAAGGTTATCAGGTTGCACCTGCTGAAATTGA
GGGAATACTCTTACAACATCCGTATATTGTTGATGCCGGCGTTACTGGTATACCG
30 GATGAAGCCGCGGGCGAGCTTCCAGCTGCAGGTGTTGTAGTACAGACTGGAAAA
TATCTAAACGAACAAATCGTACAAGATTTTGTTCAGTCAAGTTTCAACAGCCA
AATGGCTACGTGGTGGGGTGAAATTTTGGATGAAATCCCAAAGGATCAACTG
GAAAAATTGACAGAAAAGTGTTAAGACAAATGTTTGAAAAACACACCAATGGG

35 90-1B5 (SEQ ID NO:6)

GGATCCAATGGCAGATAAGAATATTTTATATGGGCCC GAACCATTTTATCCCT
TGGAAGA 60
TGGGACGGCTGGAGAACAGATGTTTGACGCATTATCTCGTTATGCAGATATTC
CGGGCTG 120
40 CATAGCATTGACAAATGCTCATAAAAAGAAAATGTTTTATATGAAGAGTTTC
TGAAACT 180
GTCGTGTCGTTTAGCGGAAAGTTTTTAAAAGTATGGATTA AAAACAAAACGAC
ACAATAGC 240
GGTGTGTAGCGAAAATGGTCTGCAATTTTCCCTCCTGTAATTGCATCATTGT
45 ATCTTGG 300
AATAATTGTGGCACCTGTTAACGATAAATACATTGAACGTGAATTAATACAC
AGTCTTGG 360
TATTGTAAAACCACGCATAGTTTTTTGCTCCAAGAATACTTTTCAAAAAGTAC

TGAATGT 420
 AAAATCTAAATTTAAATCTATTGAAACTATTATTATATTAGACTTAAATGAAG
 ACTTAGG 480
 AGGTTATCAATGCCTCAACAACCTTTATTTCTCAAATTCGATAGTAATCTGG
 5 ACGTAAA 540
 AAAATTTAAACCATATTCTTTTAATCGAGACGATCAGGTTGCGTTGATTATGT
 TTTCTTC 600
 TGGTACAACCTGGTCTGCCGAAGGGAGTCATGCTAACTCACAAGAATATTGTT
 GCACGATT 660
 10 TTCTCTTGCAAAGATCCTACTTTTGGTAACGCAATTAATCCCACGACAGCAA
 TTTTAAC 720
 GGTAATACCTTTCCACCATGGTTTTGGTATGATGACCACATTAGGATACTTTA
 CTGTGG 780
 ATTCCGAGTTGTTCTAATGCACACGTTTGAAGAAAACTATTTCTACAATCAT
 15 TACAAGA 840
 TTATAAAGTGGAAAGTACTTTACTTGTACCAACATTAATGGCATTCTTGCAA
 AAAGTGC 900
 ATTAGTTGAAAAGTACGATTTATCGCACTTAAAAGAAATTGCATCTGGTGGCG
 CACCTTT 960
 20 ATCAAAGAAATTGGGGAGATGGTGAAAAACGGTTTAAATTAACCTTTGTC
 AGGCAAGG 1020
 GTATGGATTAACAGAAACCACTTCGGCTGTTTTAATTACACCGAAAGGTGAC
 GCCAAACC 1080
 GGGATCAACTGGTAAAATAGTACCATTTACGCTGTTAAAGTTGTCGATCCTA
 25 CAACAGG 1140
 AAAAATTTTGGGGCCAAATGAACCTGGAGAATTGTATTTAAAGGCCCGATG
 ATAATGAA 1200
 GGGTTATTATAATAATGAAGAAGCTACTAAAGCAATTATTGATAATGACGGA
 TGGTTGCG 1260
 30 CTCTGGTGATATTGCTTATTATGACAATGATGGCCATTTTTATATTGTGGACA
 GGCTGAA 1320
 GTCACTGATTAATATAAAGGTTATCAGGTTGCACCTGCTGAAATTGAGGGA
 ATACTCTT 1380
 ACAACATCCGTATATTGTTGATGCCGGCGTTACTGGTATACCGGATGAAGCCG
 35 CGGGCGA 1440
 GCTTCCAGCTGCAGGTGTTGTAGTACAGACTGGAAAATATCTAAACGAACAA
 ATCGTACA 1500
 AGATTATGTTGCCAGTCAAGTTTCAACAGCCAAATGGCTACGTGGTGGGGTG
 AAATTTT 1560
 40 GGATGAAATTCCAAAGGATCAACTGGAAAAATTGACAGAAAAGTGTTAAGA
 CAAATGTT 1620
 TGAAAAACACACCAATGGG 1639

133-1B2 (SEQ ID NO:7)

45 AGATCCAATGGCAGATAAGAATATTTTATATGGGCCCGAACCATTTTATCCCTTG
 GAAGATGGGACGGCTGGAGAACAGATGTTTGACGCATTATCTCGTTATGCAGAT
 ATCCGGGCTGCATAGCATTGACAAATGCTCATACAAAGAAAATGTTTTATATG
 AAGAGTTTCTGAAACTGTCGTGTCGTTTAGCGGAAAGTTTTAAAAGTATGGATT

AAAACAAAACGACACAATAGCGGTGTGTAGCGAAAATAGTCTGCAATTTTTCTCT
TCCTGTAATTGCATCATTGTATCTTGAATAATTGTGGCACCTGTTAACGATAAAA
TACATTGAACGTGAATTAATACACAGTCTTGGTATTGTAAAACCACGCATAGTTT
TTTGCTCCAAGAATACTTTTCAAAAAGTACTGAATGTAAAATCTAAATTTAAAATC
5 TATTGAACTATTATTATATTAGACTTAAATGATGACTTAGGAGGTTATCAATGC
CTCAACAACCTTTATTTCTCAAAATTCCGATAGTAATCTGGACGTAAAAAAATTTA
AACCATATTCTTTAATCGAGACGATCAGGTTGCGTTGATTATGTTTTCTTCTGGT
ACAACCTGGTCTGCCGAAGGGAGTCATGCTAACTCACAAGAATATTGTTGCACGA
TTTTCTATTGCAAAAGATCCTACTTTTGGTAACGCAATTAATCCCACGTCAGCAA
10 TTTTAACGGTAATACCTTTCCACCATGGTTTTGGTATGATGACCACATTAGGATA
CTTTACTTGTGGATTCCGAGTTGTTCTAATGCACACGTTTGAAGAAAACTATTT
CTACAATCATTACAAGATTATAAAGTGGAAAGTACTTTACTTGTACCAACATTA
TGGCATTTCCTGCAAAAAGTGCATTAGTTGAAAAGTACGATTTATCGCACTTAAA
AGAAATTGCATCTGGTGGCGCACCTTTATCAAAAGAAATTGGGGAGATGGTGAA
15 AAAACGGTTTAAATTTAACTTTGTCAGGCAAGGGTATGGATTAACAGAAACCAC
TTCGGCTGTTTTAATTACACCGAAAGGTGACGCCAAACCGGGATCAACTGGTAA
AATAGTACCATTTACGCTGTTAAAGTTGTCGATCCTACAACAGGAAAAATTTG
GGGCCAAATGAACCTGGAGAATTGATTTTTAAAGGCCCGATGATAATGAAGGGT
TATTATAATAATGAAGAAGCTACTAAAGCAATTATTGATAATGACGGATGGTTG
20 CGCTCTGGTGATATTGCTTATTATGACAATGATGGCCATTTTTATATTGTGGACA
GGCTGAAGTCACTGATTAATATAAAGTTATCAGGTTGCACCTGCTGAAATTGA
GGGAATACTCTTACAACATCCGTATATTGTTGATGCCGGCGTTACTGGTATACCG
GATGAAGCCCGGGCGAGCTTCCAGCTGCAGGTGTTGTAGTACAGACTGGAAAA
TATCTAAACGAACAAATCGTACAAGATTATGTTGCCAGTCAAGTTTCAACAGCCA
25 AATGGCTACGTGGTGGGGTATTTTTGGATGAAATTCCCAAAGGATCAACTG
GAAAAATTGACAGAAAAGTGTTAAGACAAATGTTAGAAAAACACACCAATGGG

146-1H2 (SEQ ID NO:8)

GGATCCAATGGCAGATAAGAATATTTTATATGGGCCCCGAACCATTTTATCCCTTG
30 GAAGATGGGACGGCTGGAGAACAGATGTTTGACGCATTATCTCGTTATGCAGCT
ATTCCGGGCTGCATAGCATTGACAAATGCTCATACAAAAGAAAATGTTTTATATG
AAGAGTTTCTGAAACTGTCGTGTCGTTTAGCGGAAAAGTTTTAAAAAGTATGGATT
AAAACAAAACGACACAATAGCGGTGTGTAGCGAAAATAGTCTGCAATTTTTCTCT
TCCTGTAATTGCATCATTGTATCTTGAATAATTGTGGCACCTGTTAACGATAAAA
35 TACATTGAACGTGAATTAATACACAGTCTTGGTATTGTAAAACCACGCATAGTTT
TTTGCTCCAAGAATACTTTTCAAAAAGTACTGAATGTAAAATCTAAATTTAAAATC
TATTGAACTATTATTATATTAGACTTAAATGAAGACTTAGGAGGTTATCAATGC
CTCAACAACCTTTATTTCTCAAAATTCCGATAGTAATCTGGACGTAAAAAAATTTA
AACCCTATTCTTTAATCGAGACGATCAGGTTGCGTCGATTATGTTTTCTTCTGGT
40 ACAACTGGTCTGCCGAAGGGAGTCATGCTAACTCACAAGAATATTGTTGCACGA
TTTTCTATTGCAAAAGATCCTACTTTTGGTAACGCAATTAATCCCACGTCAGCAA
TTTTAACGGTAATACCTTTCCACCATGGTTTTGGTATGATGACCACATTAGGATA
CTTTACTTGTGGATTCCGAGTTgTTCTAATGCACACGTTTGAAGAAAACTATTTT
TACAATCATTACAAGATTATAAAGTGGAAAGTACTTTACTTGTACCAACATTAAT
45 GGCATTTCTTGCAAAAAGTGCATTAGTTGAAAAGTACGATTTATCGCACTTAAAA
GAAATTGCATCTGGTGGCGCACCTTTATCAAAAGAAATTGGGGAGATGGTGAAA
AAACGGTTTAAATTTAACTTTGTCAGGCAAGGGTATGGATTAACAGAAACCACT
TCGGCTGTTTTAATTACACCGAAAGGTGACGCCAAACCGGGATCAACTGGTAAA

ATAGTACCATTACACGCTGTAAAGTTGTCGATCCTACAACAGGAAAAATTTTGG
GGCCAAATGAACCTGGAGAATTGTATTTAAAGGCCCGATGATAATGAAGGGTT
ATTATAATAATGAAGAAGCTACTAAAGCAATTATTGATAATGACGGATGGTTGC
GCTCTGGTGATATTGCTTATTATGACAATGATGGCCATTTTTATATTGTGGACAG
5 GCTGAAGTCACTGATTAAATATAAAGGTTATCAGGTTGCACCTGCTGAAATTGAG
GGAATACTCTTACAACATCCGTATATTGTTGATGCCGGCGTTACTGGTATACCGG
ATGAAGCCGCGGGCGAGCTTCCAGCTGCAGGTGTTGTAGTACAGACTGGAAAAT
ATCTAAACGAACAAATCGTACAAGATTATGTTGCCAGTCAAGTTTCAACAGCCA
AATGGCTACGTGGTGGGGTGAAATTTTTGGATGAAATTCCTAAAGGATCAACTG
10 GAAAAATTGACAGAAAAGTGTTAAGACAAATGTTAGAAAAACACACCAATGGG